



# ND Series

Grade 1 Cylindrical Locks

Mechanical | Wired Electrified | Wireless Electronic



[Commercial.Schlage.com](https://www.commercial.schlage.com)

# Contents

<b>Overview</b> .....	<b>3</b>	<b>Wireless Electronic</b> .....	<b>26</b>
<b>Key Features</b> .....	<b>4</b>	A Detailed Look - NDE Wireless Electronic .....	27
Cylindrical Lock Comparison.....	7	Specifications.....	28
<b>Trims &amp; Finishes</b> .....	<b>8</b>	Functions.....	29
Suiting.....	9	<b>Credentialed &amp; Key Systems</b> .....	<b>29</b>
Accessibility & Life Safety .....	10	Readers, Credentialed & Power Supplies.....	30
<b>Mechanical</b> .....	<b>12</b>	Cylinders & Key Systems .....	32
A Detailed Look - ND Mechanical.....	13	Cylinder Options.....	34
Complementing Mechanical Healthcare Trims .....	14	Lock Options.....	35
Mechanical Lock Functions.....	15	<b>Ordering &amp; Specifications</b> .....	<b>36</b>
<b>Wired Electrified</b> .....	<b>22</b>	How to Order.....	36
A Detailed Look - ND Wired Electrified .....	23	Product Specifications.....	38
Wired Electrified Lock Functions.....	24		
Functional Cross Reference.....	25		

## U.S. Customer Service

877-671-7011, Option 1  
Support@allegion.com

### Ordering

Allegion\_Orders@allegion.com  
eFax: 1-833-312-3669

## Technical Product Support

877-671-7011, Option 2  
Mechanical\_Locks\_TechProdSupport@allegion.com  
Electronic\_Lock\_TechProdSupport@allegion.com  
Readers\_Credentialed\_Biometrics\_TechProdSupport@allegion.com  
Engage.Tech.Prod.Support@allegion.com

## Master Key Support

Mechanical\_Locks\_TechProdSupport@allegion.com

### Ordering

U.S. > Customer Service  
Canada > Canada.Masterkey@allegion.com  
International > Intl.SCH.SS@allegion.com

## Canada Customer Service

800-900-4734  
Canada.CustomerService@allegion.com

### Ordering

Canada.Orders.Service@allegion.com  
eFax: 1-800-209-4734

## Online Support

Knowledge Center > kc.allegion.com  
How To Videos > www.youtube.com/SchlageSecurity  
**or** us.allegion.com/supportvideos  
Code Support > idighardware.com

## Restricted Account Support

KeyControlDepartment@allegion.com  
Support.restrictedproduct@allegion.com > Sign In

## Overtur™ Key System Support

Support.overtur.allegion.com > Submit a ticket

# INNOVATION THAT WORKS FOR YOU

Designed for beauty, function and enduring quality, the ND Series offers a full range of solutions to allow a common aesthetic and consistent user experience throughout your building. Mechanical, electrified and electronic locks feature function and trim options to meet the needs of most markets including K-12 and healthcare.

Grade 1 is just the beginning of ND Series strength. These locks significantly exceed BHMA requirements for cycle, lever torque, hammer blow, lever pull and other tests. So, whether your application calls for high abuse resistance or just reliable operation over millions of cycles, you can be confident ND Series locks will last and perform.



## A Legacy of Trust

Over a century ago, Walter Schlage invented the cylindrical lock. His was a simple solution to a problem hidden in plain sight, and from it he built a company that has since grown to become one of the most recognizable names in the security industry. Delivering on quality and building on the trust of our customers, Schlage continues a legacy of providing innovative locking hardware and access control solutions to suit all types of commercial, institutional and multifamily spaces. And, everything we do is backed by friendly, knowledgeable service and support.



## Beyond the Brand

Schlage is part of the Allegion family of safety and security solutions featuring other pioneering brands like LCN® and Von Duprin®. Focusing on security around the door and in adjacent areas, we strive to be a trusted advisor to our customers, providing seamless access solutions to secure buildings, people and property. We do this by collaborating with our customers and offering valued services that support their day-to-day responsibilities, including architectural and specification consulting, security and safety consulting, technical services, code compliance support, and training.

## STRONG

The ND Series is designed to be the strongest cylindrical lock Schlage has ever built.

- Prevents entry and maintains egress against 3,100 in-lb abusive lever torque—the equivalent of over 690 lbs applied to the end of a 4-1/2" lever (2.6x BHMA requirements)
- Restricts entry against 1,600 lbs offset lever pull (8x BHMA requirements)
- Withstands attack against 100 vertical impacts<sup>1</sup> (20x BHMA requirements)
- Near zero droop and wobble after 16M cycles (16x BHMA requirements)
- Latch retraction with 200-lb preload for confident operation in warped and preloaded doors (4x BHMA requirements)

Note: Performance related to cylinder pull testing requirements is dependent on cylinder format and may not meet full Grade 1 requirements when an interchangeable core is used.

1. Vertical impact testing stopped after 100 blows with no sign of failure or stress.

## SECURE

A strong lock is only part of the security equation—proper key and card access control is equally important.

- Everest 29™ cylinder with S123 keyway is provided standard which prohibits unauthorized key duplication at local retail stores and is patent protected until 2029
- Dealer and end user restricted, geographically exclusive Primus cylinder options for advanced key control
- Available compatibility with 10 different non-Schlage key systems
- The unique SL cylinder option is designed to accept the same Schlage A2 key system of SFIC cylinders, enabling one key system to span Conventional, FSIC and SFIC cylinder formats for better control
- Wired electrified and wireless electronic locks enable the use of electronic credentials for increased visibility and control over access
- Schlage smart credentials using MIFARE® DESFire® technology utilize encryption, mutual authentication and key diversification to ensure the highest levels of security



# SMART

**Smart means using innovation to make solutions more efficient, flexible, and easier to install and use.**

- One platform, three solutions (mechanical, wired electrified, wireless electronic)—same look and feel throughout the building for a consistent user experience and lower cost of ownership
- Wired electrified lock has autodetecting 12/24V input, selectable fail safe/fail secure operation, and plug-in Request to Exit (RX) for installation and inventory flexibility
- Energy efficient design allows multiple locks on a single power supply with no “hot levers”
- Wireless electronic locks can be managed real-time by a wide variety of access control systems using the ENGAGE™ Gateway
- Wireless electronic locks provide the option to leverage existing network infrastructure to manage access and communicate updates
- Mobile enabled wireless locks are ready for the future with the ability to read Bluetooth® and NFC mobile credentials
- Shared door prep allows upgrade from ND mechanical lock to NDE wireless electronic with minor modifications



**More than just locks, Schlage delivers a complete portfolio and an infrastructure of support throughout the entire build and ownership process.**

- Order entry, customer service, technical support, engineering and manufacturing are co-located in the same building in Colorado Springs, Colorado
- Comprehensive support from our sales offices includes consultations, masterkey development and training, industry and code training, specification writing, and product service
- Schlage products suite with other Allegion brands including Von Duprin® exit devices, LCN® door closers and Steelcraft® doors and frames
- A custom engineering department that can develop specialized functions, trim and finishes for unique applications
- Trusted brand for over 100 years


# ND SERIES OFFERS A GRADE 1 SOLUTION FOR THE ENTIRE PROJECT

**ND Mechanical**




*Suitable for all openings*

**ND Wired Electrified**

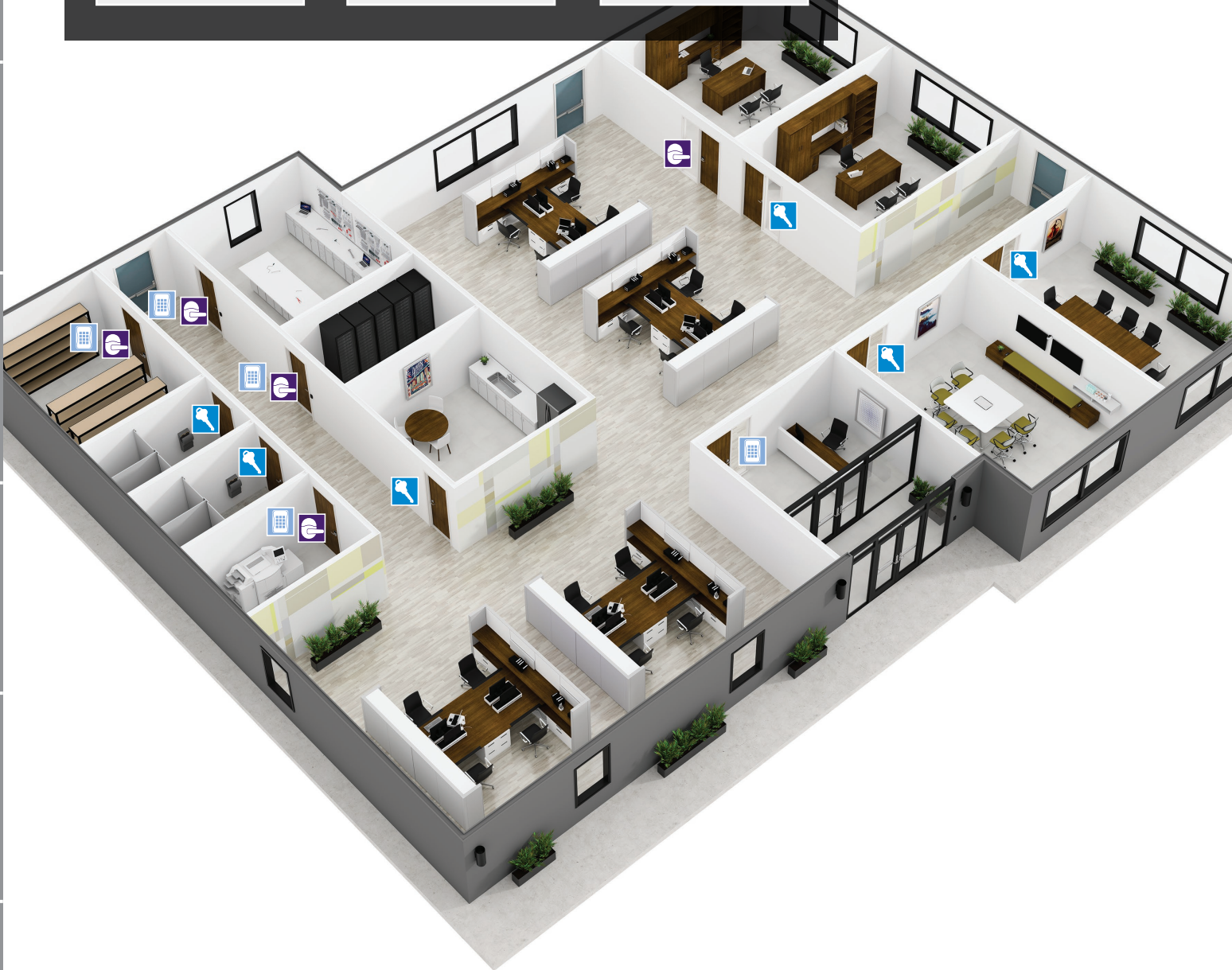


*Ideal for high-traffic access control*

**NDE Wireless Electronic**



*Ideal for low-traffic access control*



## ND MECHANICAL



### Applications

The ND Series' functional and trim offerings are the most expansive of the Schlage cylindrical lock portfolio. This extremely versatile lock is made to handle the abuses of heavy use in any commercial setting. Options include best-in-class lock status indication ideal for classroom security and ligature-resistant options for the healthcare market.

Because ND uses an ANSI door prep common across cylindrical locks, it is ideal for both new construction and retrofit upgrades.

### Key Features

- Significantly exceeds ANSI/BHMA A156.2 requirements for Grade 1 cylindrical locks
- 27 mechanical functions plus eight that feature Vandgard® locked lever protection
- Nine lever designs, two rose designs, status indication and ligature-resistant trim options
- Nine standard finishes, plus an antimicrobial coating option
- Supports Conventional, FSIC, SL and SFIC cylinder formats plus high-security UL 437 options
- Multiple key systems available – open, patented, restricted, and geographically exclusive
- Support for 10 non-Schlage cores (see cylinder section)

## ND WIRED ELECTRIFIED



### Applications

Electrified locks complement mechanical ND Series where wired electronic access control solutions are desired. They can be applied as part of a network or independently with a remote access switch such as may be used for a reception area.

Electrified ND locks are ideal for high-traffic areas where line power ensures continuous operation. They are most easily incorporated into new construction where electrified door prep, conduit hinges, and wiring is planned for the building.

### Key Features

All mechanical features plus:

- Combines mechanical strength with the convenience of electronic access control
- Auto-detects 12V or 24V DC
- Selectable EL/EU operation
- Three electrified functions
- Low 0.24 amp max current draw allows multiple locks on a single power supply
- Low 0.01 amp holding current eliminates “hot levers” in electrically locked applications
- Modular Request-to-Exit (RX) can be added at any time

## NDE WIRELESS ELECTRONIC



### Applications

NDE mobile enabled wireless locks are designed to affordably extend electronic access control deeper into the building beyond traditional perimeter and high security openings.

The NDE is ideal for both commercial new construction and retrofit. Facilities can benefit from the enhanced security, efficiency, and convenience of upgrading to electronic credentials.

### Key Features

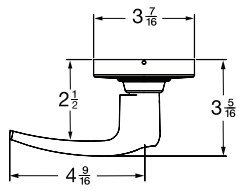
All mechanical features<sup>1</sup> plus:

- Interior push button with indication for storeroom, office, privacy and apartment functionality
- Compatible with Bluetooth, NFC, smart, or proximity credentials
- Integrated credential reader, door position sensor, and request-to-exit (RX) switch
- Built-in Bluetooth® enables wireless configuration from smart phones/tablets
- Functions in offline or No-Tour mode or as a networked lock with either periodic check-ins or real-time management
- Up to 2 years of battery life

1. NDE wireless electronic is not available in 613 finish.

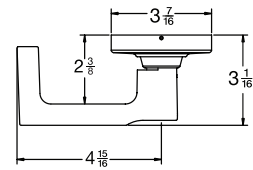
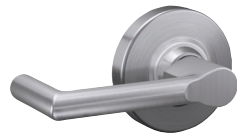
# Lever Designs & Finishes

## Athens (ATH)



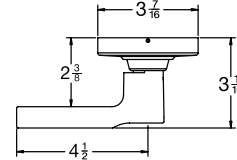
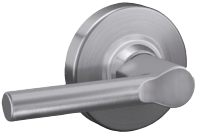
**Cores** KIL, FSIC, SFIC, L-CO, L-SA, J-CO6, J-ME, J-SA, J-YA6

## Boardwalk (BRK)<sup>1</sup>



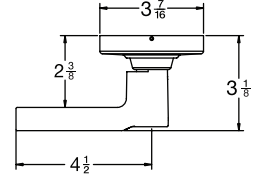
**Cores** KIL, FSIC, SFIC

## Broadway (BRW)



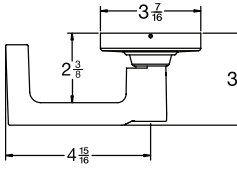
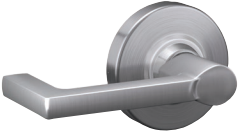
**Cores** KIL, FSIC, SFIC

## Latitude (LAT)



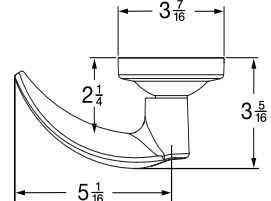
**Cores** KIL, FSIC, SFIC

## Longitude (LON)<sup>1</sup>



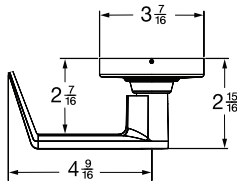
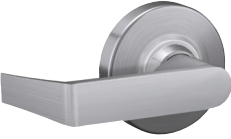
**Cores** KIL, FSIC, SFIC

## Omega (OME)<sup>1</sup>



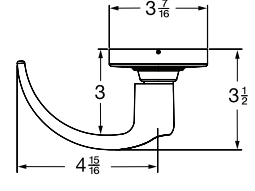
**Cores** KIL, FSIC, SFIC

## Rhodes (RHO)<sup>1</sup>



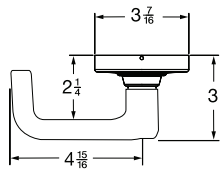
**Cores** KIL, FSIC, SFIC, L-CO, L-SA, J-CO6, J-CO7, J-ME, J-SA, J-YA6, J-YA7

## Sparta (SPA)<sup>1</sup>



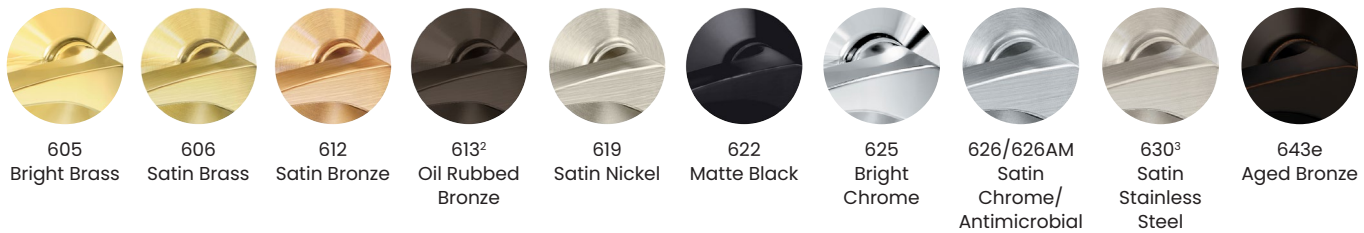
**Cores** KIL, FSIC, SFIC, L-CO, L-SA, J-CO6, J-ME, J-SA, J-YA6

## Tubular (TLR)<sup>1</sup>



**Cores** KIL, FSIC, SFIC, L-CO, L-SA, J-CO6, J-ME, J-SA, J-YA6

## Finishes



1. Boardwalk, Longitude, Omega, Rhodes, Sparta, and Tubular levers comply with California state code for return within 1/2" of door face.  
 2. NDE wireless electronic locks not available in 613 and 630 finishes.  
 3. Available on HSLR trim only.

# Lever & Finish Suiting

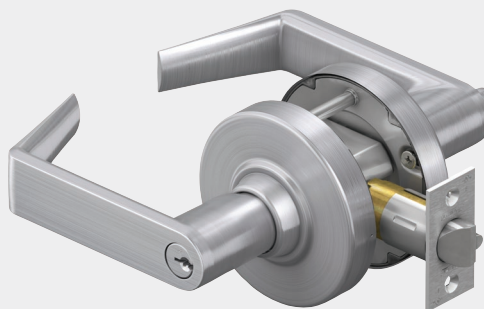
ND Series levers suite widely across mechanical and electronic solutions to provide design and finish options that can carry throughout your building, campus or business.

Reference <sup>1</sup>	Schlage Mechanical/ Electrified Locks			Schlage Locks Electronic			Von Duprin Exits	
	Cylindrical			Wireless		Wired	Exterior Trims	
	ND Series	ALX Series	PC Series	NDE <sup>2</sup>	AD Series <sup>3</sup> CO Series <sup>3</sup>	AD Series <sup>3</sup>	98/99 <sup>4</sup>	33A/35A <sup>5</sup> 94/95 <sup>5</sup>
Athens (07)	●	●	●	●	●	●	●	●
Boardwalk (M81)	●	●	●	●	●	●	●	●
Broadway (M52)	●	●	●	●	●	●	●	●
Latitude	●	●	●	●	●	●	●	●
Longitude	●	●	●	●	●	●	●	●
Omega / VD 16	●	●		●	●	●	●	●
Rhodes / VD 06	●	●	●	●	●	●	●	●
Sparta / VD 17	●	●	●	●	●	●	●	●
Tubular / VD 03	●	●	●	●	●	●	●	●

1. Von Duprin uses numerical references when available.
2. NDE is not available in 613 finish.
3. AD/CO Series are not available in 609, 613, 622, 629, or 630/630AM finishes.
4. 98/99 exit devices are not available in 609 or 629 finishes.
5. 94/95 exit devices are not available in 609, 619, 629, 630/630AM, or 643e finishes.

## Perfect Suiting with ALX Series Grade 2 Locks

The ALX Series is nearly indiscernible from the ND Series on the outside. It's made to "perfectly suite" with ND providing a cost saving alternative on projects where Grade 2 locks can be utilized. Function options for ALX Series represent interior doors most appropriate for Grade 2 applications. Please see the reference chart on page 25 for a function availability comparison.



## Schlage Locks



### PC Series Cylindrical Locks / Grade 1

PC series offers a price sensitive alternative designed to meet grade one standards for use primarily within the multi-family market. These locks are offered in six finishes and eight of the most common functions.



### AD & CO Series Electronic Locks / Grade 1

In addition to the NDE wireless electronic locks for entries where credential use is important, the AD and CO Series locks provide additional functional options for networked and standalone use.

## Von Duprin Exit Devices



### 98/99 Exit Devices / Grade 1

The 98/99 Series is engineered, manufactured, and tested for superior performance. Designed for flexibility, these devices are configurable and upgradable to meet customer needs.



### 33A/35A Exit Devices / Grade 1

Offering the same innovative features as the 98/99 Series, the 33A/35A Series of exit devices is intended for narrow-stile doors.



### 94/95 Exit Devices / Grade 1

The 94/95 pushbar is recessed into the door to minimize the external profile, allowing more protection from abuse by reducing impact.

# Accessibility & Life Safety

Door hardware should be as effective in helping people go about their lives as it is in securing their environments. The ND Series is designed with these requirements in mind.

## Accessibility

All Schlage ND levers<sup>1</sup> comply with the Americans with Disabilities Act (ADA), which requires that “Operable parts shall be operable with one hand and shall not require tight grasping, pinching, or twisting of the wrist. The force required to activate operable parts shall be 5 pounds (22.2 N) maximum.”

## Tactile Warning for the Visually Impaired

Tactile warning is a special texture applied to the outside lever to alert the visually impaired to a potential hazard on the opposite side of the door (electrical room, a workshop or other hazardous area, etc). Tactile warning is typically applied to the outside lever only and is specified by an 8 prefix on the lever design.

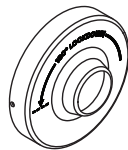
### Milled



Milling pattern typically applied to the backside of an ND Series lever. Available on all lever styles except Omega.

## Instruction Rose

Classroom security functions ND78 and ND98, when ordered in 626 finish, come standard with an interior instruction rose that clearly identifies key rotation to aid rapid lockdown.



1. Functions utilizing a push/turn button in the lever to lock do not meet this standard.

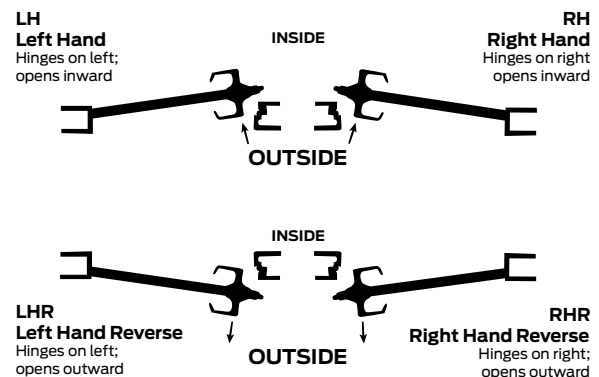
## Life Safety

The Schlage ND is UL listed for use on 3-hour fire doors up to 4'0" x 10'0". Boardwalk, Longitude, Omega, Rhodes, Sparta and Tubular levers comply with the California State fire code for return to within 1/2" of the door face.

Additionally, the Schlage ND exceeds the BHMA warped door test by 4x. The BHMA standard requires that the latch be able to retract with a 50lb pre-load; the ND can retract the latch with a 200lb preload – providing more range to open the door in the event the opening becomes bound or otherwise compromised.

## Door Handing

All ND Series locks except the ligature-resistant HSLR trim can be configured during installation to support any door handing. When determining handing for HSLR note that the lever will pivot toward the door frame instead of downward and specify accordingly.



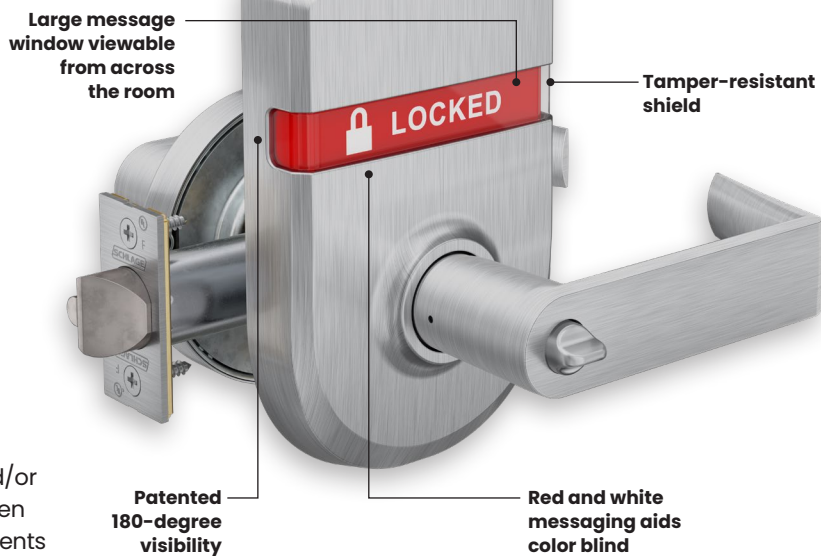


### Status Indication

The Schlage ND Series offers status indication unlike any other cylindrical lock. ND features an escutcheon style indicator that utilizes Schlage's patented 180-degree visibility to create the largest indication viewing window in the commercial lock market. Red and white messages available in multiple languages are designed to be highly visible and allow color blind individuals to read them easily at a distance on the basis of color alone.

### Know It's Locked.™

Lock status indication is about assuring safety and/or privacy. A classroom door that is visibly locked when seen from any angle, even 30' away can help students and teachers feel confident and secure. In restaurant settings, it can reduce patron time spent away from the table. In healthcare, it can inform staff of a patient's location when out of bed and give the patient a greater sense of privacy. Whether the need is for privacy on a dressing room, mother's room, or restroom door—or more importantly, for security—to know it's locked when seconds count, status indication is a valuable feature available on eleven ND Series functions.



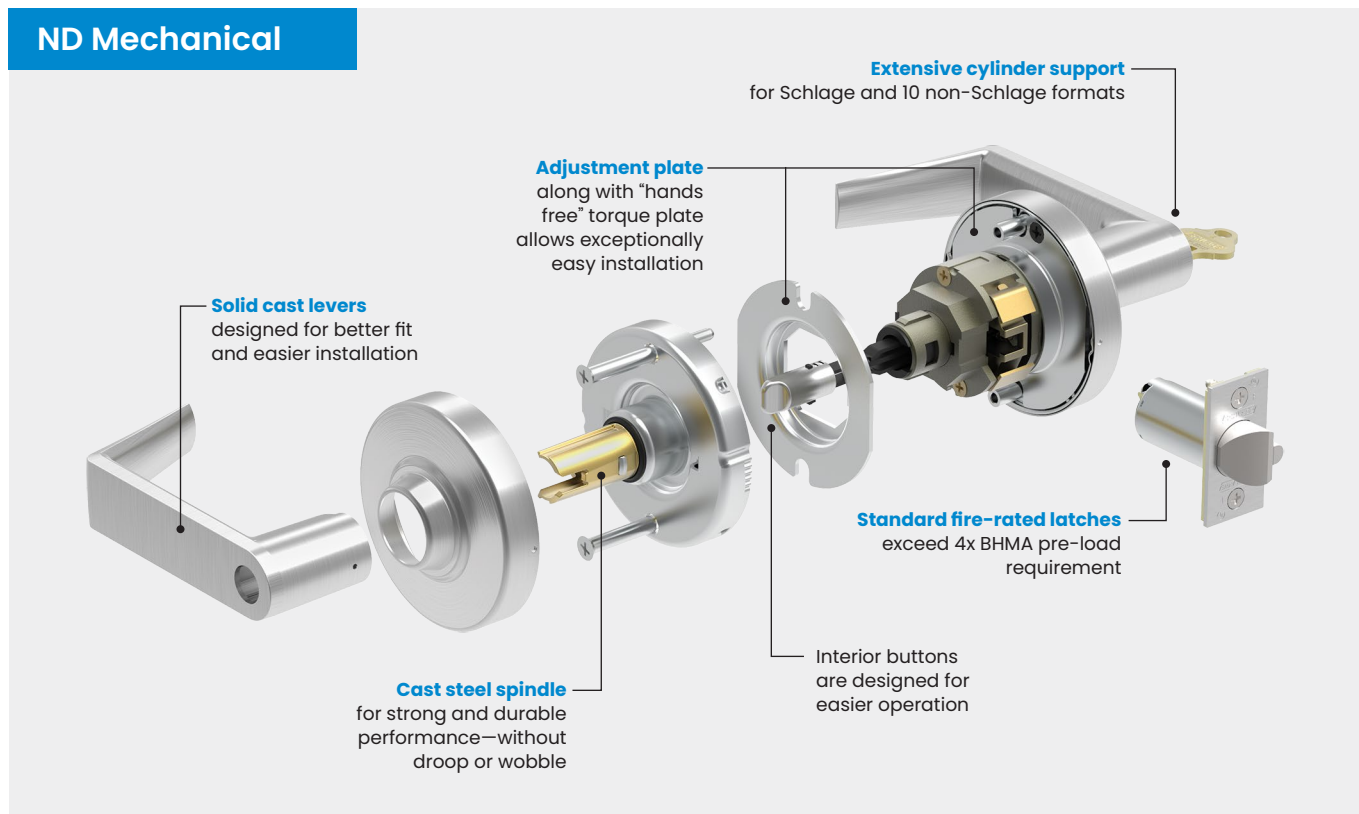
- #### Common Applications
- Classrooms
  - Study pods
  - Rehearsal rooms
  - Faculty offices
  - Nurse's office
  - Patient exam rooms
  - Physician sleeping/ on call rooms
  - Single-use restrooms
  - Focus rooms in offices
  - Lactation rooms
  - Dressing rooms

# ND Series Mechanical Locks

The ND mechanical lock, along with being Schlage's best-selling cylindrical lock, is the foundation for both the wired electrified and NDE wireless electronic lock. Not only did Schlage invent the cylindrical lock, but we continue to make it better with capabilities that go beyond Grade 1. ND Series offers unparalleled strength, exceptional durability, and installation ease. All this is in addition to what you know and expect from Schlage.

*It's smarter security you can trust.*





## Quality You Can See and Feel

Strength and durability are more than numbers, you can actually feel it in the lock – in the weight and movement of the lever and in the lasting beauty of the finish. Expect exceptional durability from ND Series.

- Tested to over 16 million cycles with near zero droop or wobble in the lever (16x the BHMA requirement)
- Latch retraction with 200 lb preload for confident operation in warped and preloaded doors (4x BHMA requirement)
- Prevents access even when subjected to torque loads up to 3,100 in-lbs (2.6x the BHMA standard)
- Withstands pry bar attacks of 1,600 lbs (8x BHMA requirement)
- Withstands 100 sledgehammer blows (20x BHMA requirement)

## The Added Benefits of Layered Key System Security

A strong lock is only part of the security equation for mechanical locks—proper key security is equally important.

- Patented Everest 29™ cylinders prohibit unauthorized key duplication at local retail stores
- Dealer and end user restricted, geographically exclusive Primus cylinder options for advanced key control
- Available compatibility with 10 different non-Schlage key systems

## Key Features

ND Series offers Schlage's widest array of finishes, styles and functions available in a cylindrical lock.

- 27 mechanical, cylindrical functions plus eight that feature Vandlgard® locked lever protection
- Nine standard finishes, plus an antimicrobial coating option
- Nine ADA compliant lever options
- Status indication and ligature-resistant trim options
- BAA compliant
- Locks are ANSI/BHMA Grade 1 certified
- Available with lead lining
- UL Listed 3-hour fire rated
- Perfectly suited to the ALX Series Grade 2 cylindrical locks
- Supports Conventional, FSIC, SL, and SFIC cylinder formats plus high-security UL 437 and competitive core options
- Multiple key system options include open, patented, restricted, and geographically exclusive

## HSLR Series Ligature-Resistant Trim

High Security Ligature Resistant (HSLR) trim is especially recommended for high-risk applications. The patented crescent-style handle design has quickly become the standard for ligature resistance and accessibility and is recognized by the widely-accepted New York State Office of Mental Health (NYS-OMH) Patient Safety Standard.

- Optional trim built onto the chassis of the Grade 1 ND Series lock
- Provides the highest level of ligature-resistance to positively contribute to healing environments
- Recommended for low-, medium- or high-risk areas
- ADA compliant – “no pinch, no grasp”
- BAA compliant
- Locks are ANSI/BHMA Grade 1 certified
- UL Listed 3-hour fire rated
- Available on 27 mechanical and electrified ND functions
- HSLR trim is also available on the L Series mortise chassis



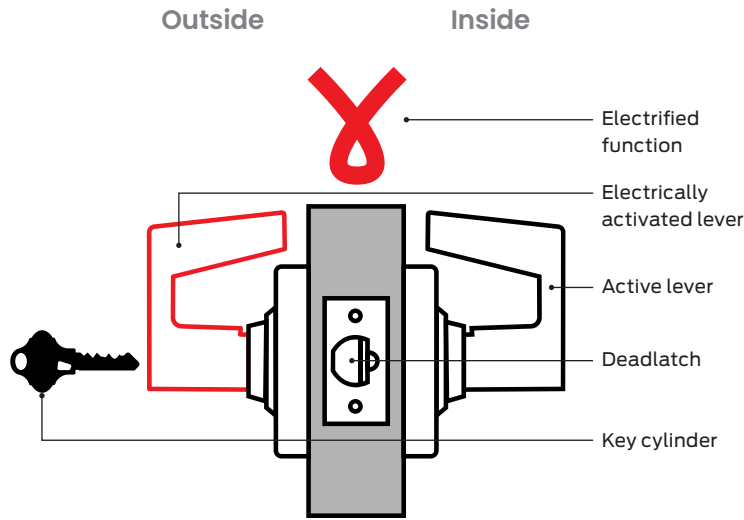
**Material:** Heavy-wrought, reinforced stainless steel

**Finishes:** 630 Satin Stainless Steel only

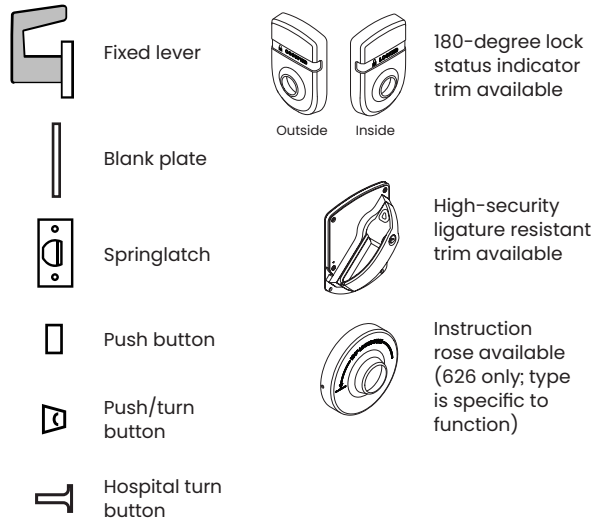
**Size:** 8.5" x 6" x 3"



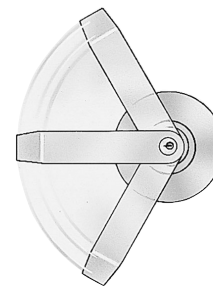
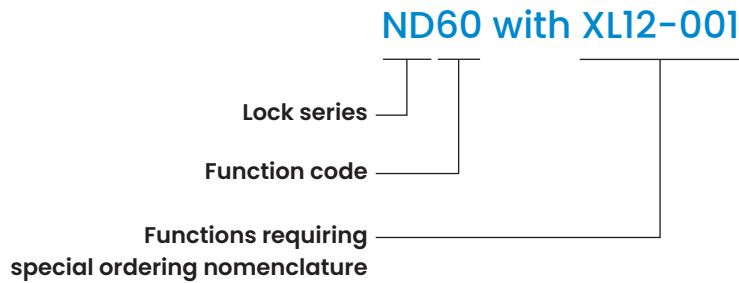
Legend



Key



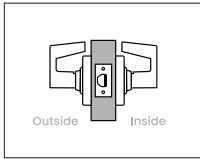
Product Identification Guide



Vandlgard® Feature

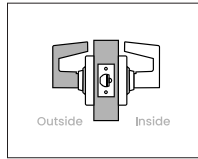
All locking functions feature Vandlgard locked lever protection as a field configurable option. It allows the outside lever to rotate freely up and down when locked to limit the ability of vandals to apply excessive force to the chassis helping to prevent damage to internal components.

## Non-Keyed Functions

**Schlage**  
**ND10****Passage latch**

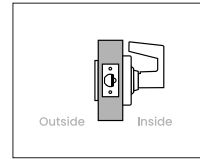
- Levers both sides; springlatch
- Latch retracted by lever from either side at all times
- Inside lever always free for immediate egress

To order configured with Request to Exit (RX), specify RX under special options.

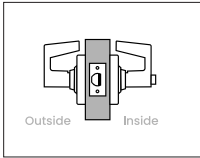
**ANSI**  
**F75****Schlage**  
**ND12****Exit lock**

- Levers both sides; deadlatch
- Outside lever always fixed; latch retracted by inside lever
- Inside lever always free for immediate egress

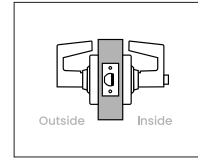
To order configured with Request to Exit (RX), specify RX under special options.

**ANSI**  
**F89****Schlage**  
**ND25****Exit lock with exterior blank plate**

- Blank plate outside; lever inside; deadlatch
- Latch retracted by inside lever
- Inside lever always free for immediate egress

**ANSI**  
-**Schlage**  
**ND30****Patio lock**

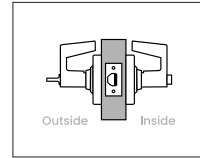
- Lever outside; push button in lever inside; springlatch
- In unlocked state latch is retracted by either lever
- Outside lever is made inoperative by pushing button on inside lever
- Rotating inside lever retracts latch and releases button unlocking outside lever; closing door also unlocks preventing lock-out
- Inside lever always free for immediate egress

**ANSI**  
**F77****Schlage**  
**ND40****Bath/bedroom privacy lock**

- Lever with emergency release recessed slot outside; push button in lever inside; springlatch
- In unlocked state latch is retracted by either lever
- Outside lever is made inoperative by pushing button on inside lever
- Rotating inside lever retracts latch and releases button unlocking outside lever; closing door also unlocks preventing lock-out
- Emergency unlock: an emergency key (sold separate) or small, flat screwdriver inserted in outside lever and turned releases button to unlock
- Inside lever always free for immediate egress

Note: Locks ordered with indicator trim fit 1-3/4" doors. Sold separate spacer kits allow application to doors 1-3/8" to 1-11/16".

To order an emergency key use part number 35-270.

**ANSI**  
**F76****Schlage**  
**ND44****Hospital privacy lock**

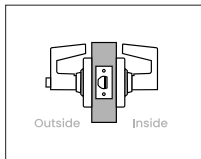
- Emergency turn in lever outside; push button in lever inside; springlatch
- In unlocked state latch is retracted by either lever
- Outside lever is made inoperative by pushing button on inside lever
- Rotating inside lever retracts latch and releases button unlocking outside lever; closing door also unlocks preventing lock-out
- Emergency unlock: rotating emergency turn in outside lever releases button to unlock
- Inside lever always free for immediate egress

Note: Locks ordered with indicator trim fit 1-3/4" doors. Sold separate spacer kits allow application to doors 1-3/8" to 1-11/16".

**ANSI**  
-

# Non-Keyed Functions

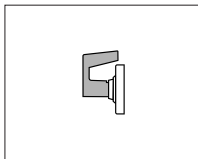
**Schlage**  
**ND45**



**Time out lock with Vandlgard®**

- Spring-loaded push button in lever outside; lever inside; springlatch
- In unlocked state latch is retracted by either lever
- Caretaker side: pushing and holding button enables Vandlgard® feature; detention side lever will rotate without engaging latch
- Releasing manually held button enables inside lever to re-engage with latch and open the door

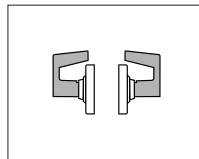
**ANSI** - **Schlage**  
**ND170**



**Single dummy trim**

- Fixed lever one side only; no latch or chassis
- Used for door pull or matching inactive trim

**ANSI** - **Schlage**  
**ND172**



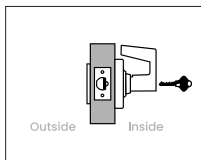
**Double dummy trim**

- Fixed levers—both sides; no latch or chassis
- Used for door pull or matching inactive trim

Note: Latch cover plates available. Order part number 47269199.

# Keyed Functions

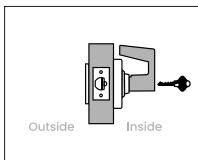
**Schlage**  
**ND25 x 70**



**Classroom exit lock**

- Blank plate outside; lever with cylinder inside; deadlatch
- In unlocked state latch is retracted by inside lever
- Outside always secure; inside lever is made inoperative by key inside
- Key inside retracts latch and unlocks inside lever

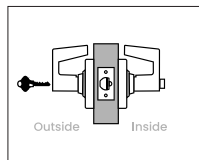
**ANSI** **F13** **Schlage**  
**ND25 x 80**



**Storeroom exit lock**

- Blank plate outside; lever with cylinder inside; deadlatch
- Outside always secure; inside lever is always fixed
- Key inside retracts latch but does not unlock lever

**ANSI** **F12** **Schlage**  
**ND50**

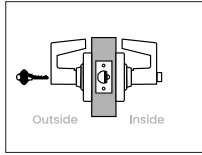


**Entrance/office lock**

- Lever with key cylinder outside; push button in lever inside; deadlatch
- In unlocked state latch is retracted by either lever
- Outside lever is made inoperative by pushing button on inside lever; key outside does not lock
- Key outside or rotating inside lever retracts latch and releases button unlocking outside lever
- Inside lever always free for immediate egress

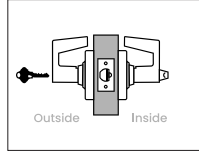
Note: Locks ordered with indicator trim fit 1-3/4" doors. Sold separate spacer kits allow application to doors 1-3/8" to 1-11/16". Indicator trim can only be ordered as a single-sided option.

## Keyed Functions

**Schlage**  
**ND52****Keyed privacy lock**

- Lever with key cylinder outside; push button in lever inside; deadlatch
- In unlocked state latch is retracted by either lever
- Outside lever is made inoperative by pushing button on inside lever; key outside does not lock
- Key outside or rotating inside lever retracts latch and releases button unlocking outside lever; closing door also unlocks preventing lock-out
- Inside lever always free for immediate egress

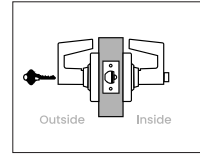
Note: Locks ordered with indicator trim fit 1-3/4" doors. Sold separate spacer kits allow application to doors 1-3/8" to 1-11/16".

**ANSI Schlage**  
**- ND53****Entrance lock**

- Lever with key cylinder outside; push/turn button in lever inside; deadlatch
- In unlocked state latch is retracted by either lever
- Outside lever is made inoperative by pushing button or pushing and turning button on inside lever; key outside does not lock
- **Pushed button unlocking:** key outside or rotating inside lever retracts latch and releases button unlocking outside lever
- **Pushed/turned button unlocking:** key outside or rotating inside lever retracts latch but does not unlock outside lever; rotate inside button to start position to allow button release and unlocking by key or by rotating inside lever
- Inside lever always free for immediate egress

Caution: Egress without fully releasing the push/turn button can result in lock-out situations.

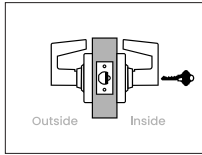
Note: Locks ordered with indicator trim fit 1-3/4" doors. Sold separate spacer kits allow application to doors 1-3/8" to 1-11/16". *Indicator trim can only be ordered as a single-sided option.*

**ANSI Schlage**  
**F109 ND55****Entrance lock with automatic unlocking**

- Lever with key cylinder outside; push/turn button in lever inside; deadlatch
- In unlocked state latch is retracted by either lever
- Outside lever is made inoperative by pushing button or pushing and turning button on inside lever; key outside does not lock
- **Pushed button unlocking:** key outside or rotating inside lever retracts latch and releases button unlocking outside lever; closing door also unlocks preventing lock-out
- **Pushed/turned button unlocking:** key outside or rotating inside lever retracts latch but does not unlock outside lever; rotate inside button to start position to allow button release and unlocking by key or by rotating inside lever
- Inside lever always free for immediate egress

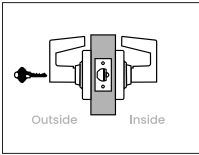
Caution: Egress without fully releasing the push/turn button can result in lock-out situations.

Note: Locks ordered with indicator trim fit 1-3/4" doors. Sold separate spacer kits allow application to doors 1-3/8" to 1-11/16".

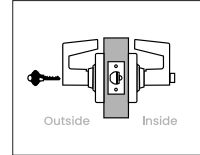
**Schlage**  
**ND60 with XN12-001****Vestibule lock with interior unlocking only**

- Lever outside; lever with key cylinder inside; deadlatch
- In unlocked state latch is retracted by either lever
- Outside lever is locked or unlocked by key inside
- Inside lever always free for immediate egress

To order, specify function and note XN12-001 as a special option.

**ANSI Schlage**  
**- ND70****Classroom lock, exterior lockdown only**

- Lever with key cylinder outside; lever inside; deadlatch
- In unlocked state latch is retracted by either lever
- Outside lever is locked or unlocked by key outside
- Inside lever always free for immediate egress

**ANSI Schlage**  
**F84 ND73****Corridor lock**

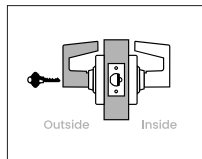
- Lever with key cylinder outside; push button in lever inside; deadlatch
- In unlocked state latch is retracted by either lever
- Outside lever is made inoperative by pushing button on inside lever or by key outside
- **When locked by pushed button:** rotating inside lever retracts latch and releases button unlocking outside lever; closing door also unlocks preventing lock-out
- **When locked by key:** rotating inside lever retracts latch but outside lever remains fixed until unlocked by key outside
- Inside lever always free for immediate egress

Note: Locks ordered with indicator trim fit 1-3/4" doors only. Sold separate spacer kits allow application to doors 1-3/8" to 1-11/16".

# Keyed Functions

**Schlage**  
**ND80**

**Storeroom lock**

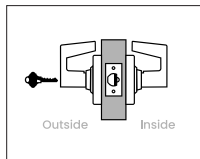


- Lever with key cylinder outside; lever inside; deadlatch
- Outside lever always fixed; latch retracted by inside lever
- Key in outside lever retracts latch only
- Inside lever always free for immediate egress

To order configured with Request to Exit (RX), specify RX under special options.

**ANSI F86** **Schlage**  
**ND81**

**Accessible storeroom lock**

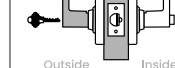
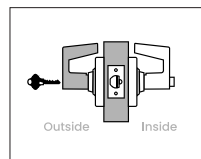


- Lever with key cylinder outside; lever inside; deadlatch
- Outside lever is always fixed when key is not present; latch retracted by inside lever
- Key outside turned counter-clockwise retracts latch; 180-degree clockwise rotation of key allows outside lever to retract latch
- Inside lever always free for immediate egress

To order configured with Request to Exit (RX), specify RX under special options.

**ANSI F86** **Schlage**  
**ND85**

**Faculty restroom lock**



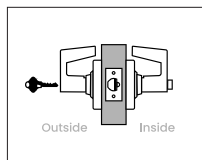
- Lever with conventional indicator cylinder outside; push button in lever inside; deadlatch
- Entrance by key only; outside lever always fixed; latch retracted by inside lever
- Push button on inside lever activates a locking pin that extends from the cylinder face to prohibit use of operating keys and indicate that the room is in use
- Turning inside lever or closing door releases the locking pin and push button to allow normal use of operating keys
- Emergency unlock: use of an emergency key (sold separate) is required to override the locking pin and unlock from the outside when push button is activated
- Inside lever always free for immediate egress

Note: Available with Conventional KIL indicator cylinder only. To order a spanner key to enable lockout feature use part number 35-251.

To order an emergency key use part number 35-102.

**Schlage**  
**ND91**

**Vandlgard® entrance/office lock**

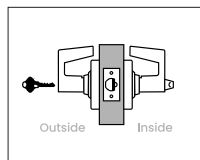


- Lever with key cylinder outside; push button in lever inside; deadlatch
- In unlocked state latch is retracted by either lever
- Outside is made inoperative by pushing button on inside lever; key outside does not lock, Vandlgard® allows outside lever to rotate freely when locked
- Key outside or rotating inside lever retracts latch and releases button unlocking outside lever
- Inside lever always free for immediate egress

Note: Locks ordered with indicator trim fit 1-3/4" doors. Sold separate spacer kits allow application to doors 1-3/8" to 1-11/16".

**ANSI F82** **Schlage**  
**ND92**

**Vandlgard® entrance lock**



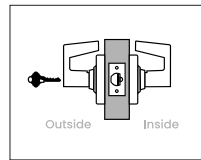
- Lever with key cylinder outside; push/turn button in lever inside; deadlatch
- In unlocked state latch is retracted by either lever
- Outside lever is made inoperative by pushing button or pushing and turning button on inside lever; key outside does not lock, Vandlgard® allows outside lever to rotate freely when locked
- **Pushed button unlocking:** key outside or rotating inside lever retracts latch and releases button unlocking outside lever
- **Pushed/turned button unlocking:** key outside or rotating inside lever retracts latch but does not unlock outside lever; rotate inside button to start position to allow button release and unlocking by key or by rotating inside lever
- Inside lever always free for immediate egress

Caution: Egress without fully releasing the push/turn button can result in lock-out situations.

Note: Locks ordered with indicator trim fit 1-3/4" doors. Sold separate spacer kits allow application to doors 1-3/8" to 1-11/16".

**ANSI F109** **Schlage**  
**ND94**

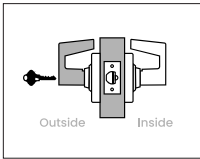
**Vandlgard® classroom lock, exterior lockdown only**



- Lever with key cylinder outside; lever inside; deadlatch
- In unlocked state latch is retracted by either lever
- Outside lever is locked or unlocked by key outside; Vandlgard® allows outside lever to rotate freely when locked
- Inside lever always free for immediate egress

# Keyed Functions

**Schlage**  
**ND96**



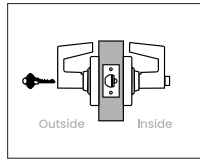
**Vandlgard®**  
**storeroom lock**



- Lever with key cylinder outside; lever inside; deadlatch
- Outside lever always inoperative; Vandlgard® allows outside lever to rotate freely when locked
- Key in outside lever retracts latch only
- Inside lever always free for immediate egress

To order configured with Request to Exit (RX), specify RX under special options.

**ANSI**  
**F86**   **Schlage**  
**ND97**



**Vandlgard®**  
**corridor lock**

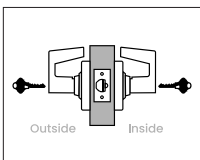


- Lever with key cylinder outside; push button in lever inside; deadlatch
- In unlocked state latch is retracted by either lever
- Outside lever is made inoperative by pushing button on inside lever or by key outside; Vandlgard® allows outside lever to rotate freely when locked
- **When locked by pushed button:** rotating inside lever retracts latch and releases button unlocking outside lever; closing door also unlocks preventing lock-out
- **When locked by key:** rotating inside lever retracts latch but outside lever remains fixed until unlocked by key outside
- Inside lever always free for immediate egress

**ANSI**  
**F90**

# Keyed, Double Cylinder Functions

**Schlage**  
**ND60**



**Vestibule lock**



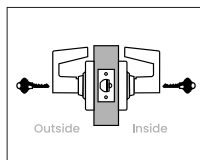
- Lever with key cylinder both sides; deadlatch
- In unlocked state latch is retracted by either lever
- Outside lever is made inoperative by key inside; key outside does not lock
- Key outside retracts latch but cannot unlock outside lever; only key inside unlocks
- Inside lever always free for immediate egress

Note: Available with optional instruction rose identifying key rotation direction for rapid lockdown. 626 finish only.

To order with instruction rose specify function and note XN12-035 as a special option.

**ANSI**  
**F88**

**Schlage**  
**ND66**



**Store lock**

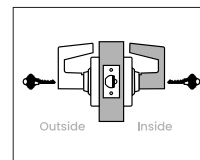


- Lever with key cylinder both sides; deadlatch
- In unlocked state latch is retracted by either lever
- Key in either lever locks or unlocks both levers

Caution: Double cylinder locks on any door, in any structure which is used for egress are a life safety hazard in times of emergency and their use is not recommended. Installation should be in accordance with existing codes only.

**ANSI**  
**F91**

**Schlage**  
**ND70 x 80**



**Classroom by storeroom lock**

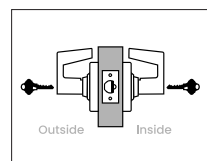
- Lever with key cylinder both sides; deadlatch
- In unlocked state inside lever is always fixed; latch retracted by outside lever
- Outside lever is locked or unlocked by key outside; key inside retracts latch but does not unlock either lever

Caution: Double cylinder locks on any door, in any structure which is used for egress are a life safety hazard in times of emergency and their use is not recommended. Installation should be in accordance with existing codes only.

# Keyed, Double Cylinder Functions

**Schlage**  
**ND72 with XN12-002**

**ANSI**  
**F80**



**Communicating lock**

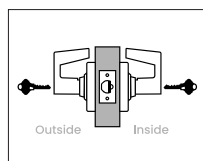
- Lever with key cylinder both sides; deadlatch
- In unlocked state latch is retracted by either lever
- Key in either lever makes inoperative only that lever
- Key in either lever retracts the latch and unlocks only that lever

Caution: Double cylinder locks on any door, in any structure which is used for egress are a life safety hazard in times of emergency and their use is not recommended. Installation should be in accordance with existing codes only.

To order, specify function and note XN12-002 as a special option.

**Schlage**  
**ND72 with XN12-003**

**ANSI**  
**F80**



**Vandlgard® communicating lock**

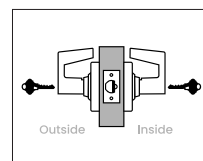
- Lever with key cylinder both sides; deadlatch
- In unlocked state latch is retracted by either lever
- Key in either lever makes inoperative only that lever; Vandlgard® allows locked lever to rotate freely when locked
- Key in either lever retracts the latch and unlocks only that lever

Caution: Double cylinder locks on any door, in any structure which is used for egress are a life safety hazard in times of emergency and their use is not recommended. Installation should be in accordance with existing codes only.

To order, specify function and note XN12-003 as a special option.

**Schlage**  
**ND78**

**ANSI**  
**F110**



**Classroom security lock (180-degree lockdown)**



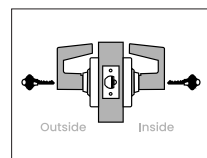
- Lever with key cylinder both sides; deadlatch
- In unlocked state latch is retracted by either lever
- Outside lever is made inoperative by rotating key in either lever 180 degrees counter-clockwise and returning to start position
- Unlock outside lever by rotating key 180 degrees clockwise in either lever and returning to start position
- Inside lever always free for immediate egress

Locks ordered in 626 finish come standard with instruction rose (47342586) identifying key rotation direction for rapid lockdown. Other finishes receive a standard rose.

Note: Locks ordered with indicator trim fit 1-3/4" doors. Sold separate spacer kits allow application to doors 1-3/8" to 1-11/16".

**Schlage**  
**ND82**

**ANSI**  
**F87**



**Institution lock**

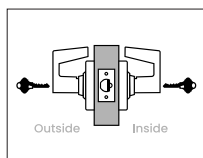


- Lever with key cylinder both sides; deadlatch
- Both levers are always fixed
- Key in either lever retracts latch only

Caution: Double cylinder locks on any door, in any structure which is used for egress are a life safety hazard in times of emergency and their use is not recommended. Installation should be in accordance with existing codes only.

**Schlage**  
**ND93**

**ANSI**  
**F88**



**Vandlgard® vestibule lock**



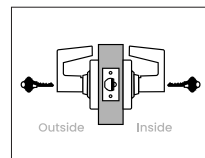
- Lever with key cylinder both sides; deadlatch
- In unlocked state latch is retracted by either lever
- Outside lever is made inoperative by key inside; key outside does not lock; Vandlgard® allows outside lever to rotate freely when locked
- Key outside retracts latch but cannot unlock outside lever; only key inside unlocks
- Inside lever always free for immediate egress

Note: Available with optional instruction rose identifying key rotation direction for rapid lockdown. 626 finish only.

To order with instruction rose specify function and note XN12-035 as a special option.

**Schlage**  
**ND98**

**ANSI**  
**F110**



**Vandlgard® classroom security lock (180-degree lockdown)**



- Lever with key cylinder both sides; deadlatch
- In unlocked state latch is retracted by either lever
- Outside lever is made inoperative by rotating key in either lever 180 degrees counter-clockwise and returning to start position; Vandlgard® allows outside lever to rotate freely when locked
- Unlock outside lever by rotating key 180 degrees clockwise in either lever and returning to start position
- Inside lever always free for immediate egress

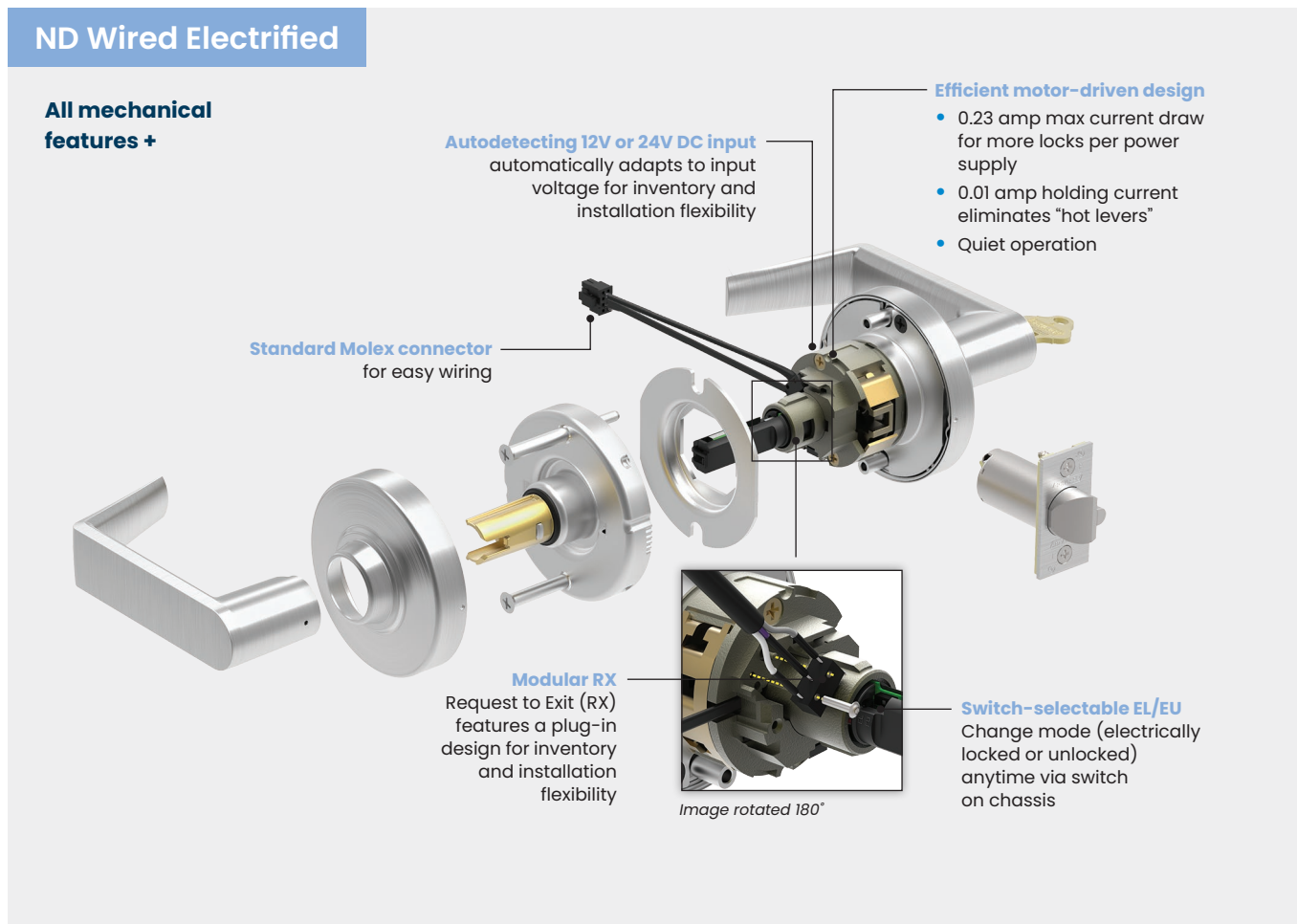
Locks ordered in 626 finish come standard with instruction rose (47342586) identifying key rotation direction for rapid lockdown. Other finishes receive a standard rose.

Note: Locks ordered with indicator trim fit 1-3/4" doors. Sold separate spacer kits allow application to doors 1-3/8" to 1-11/16".

# ND Series Wired Electrified Locks

Many of the most advanced electronic access systems still rely on the strength and functionality of the mechanical lock hardware on the door. ND Series electrified locks feature Schlage's most robust cylindrical design built for performance, security and durability. It is a "beyond Grade 1" lock in terms of strength and can be used as part of an integrated system or as a standalone solution with a remote access switch or other device as the controller.





## Security You Can Trust

The ND wired electrified lock works with access control systems to provide advanced security for your building. Built on the robust ND Series lock structure, electrified ND is tested to over 4x BHMA standards just like its mechanical counterpart to ensure dependable operation. Within the ND Series strength and reliability are more than numbers, you can actually feel it in the lock – in the weight and movement of the lever and in the lasting beauty of the finish. Expect exceptional durability from ND Series.

### Quiet Efficiency

Electrified ND quietly activates using a motor instead of a solenoid. It also offers unparalleled energy efficiency with a maximum current draw of 0.24 amp which allows more locks to run off a single power supply. The low 0.01 amp holding current eliminates any potential for hot levers.

### Application Flexibility

- Electrified ND auto senses voltage to operate in 12V or 24V DC
- Operating mode (electrically locked or unlocked) can be changed via a switch on the chassis
- Request to Exit (RX) option can be configured or added with an upgrade kit
- The standard Allegion Connect Molex™ system simplifies installation

### Key Features

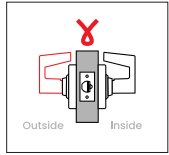
ND Series offers Schlage's widest array of finishes, styles and functions available in a cylindrical lock.

- Six electrified, cylindrical functions
- Nine standard finishes, plus an antimicrobial coating option
- Nine ADA compliant lever options
- Auto senses 12V or 24V DC
- Ligature-resistant HSLR trim option
- BAA compliant
- Locks are ANSI/BHMA Grade 1 certified
- Available with lead lining and spacer rings for 1-3/8" doors
- UL Listed 3-hour fire rated
- Supports Conventional, FSIC, and SFIC cylinder formats plus high-security UL 437 and competitive core options
- Multiple key system options include open, patented, restricted, and geographically exclusive

Wired Electrified Lock Functions

# Wired Electrified Functions

**Schlage**  
**ND12EL**



**Exit lock, electrically locked outside lever (fail safe)**

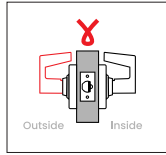


- Lever both sides; deadlatch
- Powered state: outside lever continuously locked (when in EL mode)
- When power is removed (via switch or power failure), in EL mode either lever will retract latch
- Inside lever always free for immediate egress

Note: Auto detects 12 or 24V DC. Chassis mounted switch allows field selectable EL/EU setting.

Ordering: Unless EL or EU is specified, order will default to an EU setting. Optional RX function can be ordered configured by specifying RX under special options or add later using kit part N123-062.

**ANSI Schlage**  
**- ND12EU**



**Exit lock, electrically unlocked outside lever (fail secure)**

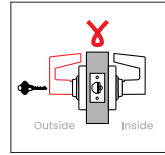


- Lever both sides; deadlatch
- Powered state: outside lever continuously unlocked (when in EU mode)
- When power is removed (via switch or power failure), in EU mode outside lever is locked
- Inside lever always free for immediate egress

Note: Auto detects 12 or 24V DC. Chassis mounted switch allows field selectable EL/EU setting.

To order configured with Request to Exit (RX), specify RX under special options.

**ANSI Schlage**  
**- ND80EL**



**Storeroom lock, electrically locked outside lever (fail safe)**

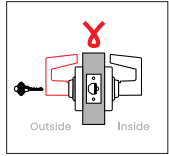


- Lever with key cylinder outside; lever inside; deadlatch
- Powered state: outside lever continuously locked (when in EL mode)
- When power is removed (via switch or power failure), in EL mode either lever will retract latch
- Key outside retracts latch but cannot change the normal locked or unlocked state of the outside lever
- Inside lever always free for immediate egress

Note: Auto detects 12 or 24V DC. Chassis mounted switch allows field selectable EL/EU setting.

Ordering: unless EL or EU is specified, order will default to an EU setting. Optional RX function can be ordered configured by specifying RX under special options or add later using kit part N123-062.

**Schlage**  
**ND80EU**



**Storeroom lock, electrically unlocked outside lever (fail secure)**

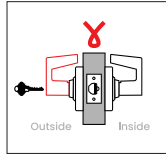


- Lever with key cylinder outside; lever inside; deadlatch
- Powered state: outside lever continuously unlocked (when in EU mode)
- When power is removed (via switch or power failure), in EU mode outside lever is locked
- Key outside retracts latch but cannot change the normal locked or unlocked state of the outside lever
- Inside lever always free for immediate egress

Note: Auto detects 12 or 24V DC. Chassis mounted switch allows field selectable EL/EU setting.

To order configured with Request to Exit (RX), specify RX under special options.

**ANSI Schlage**  
**- ND96EL**



**Vandlgard® storeroom lock, electrically locked outside lever (fail safe)**

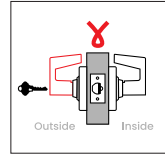


- Lever with key cylinder outside; lever inside; deadlatch
- Powered state: outside lever continuously locked (when in EL mode)
- Vandlgard® feature allows outside lever, when locked, to rotate without engaging latch
- When power is removed (via switch or power failure), in EL mode either lever will retract latch
- Key outside retracts latch but cannot change the normal locked or unlocked state of the outside lever
- Inside lever always free for immediate egress

Note: Auto detects 12 or 24V DC. Chassis mounted switch allows field selectable EL/EU setting.

Ordering: unless EL or EU is specified, order will default to an EU setting. Optional RX function can be ordered configured by specifying RX under special options or add later using kit part N123-062.

**ANSI Schlage**  
**- ND96EU**



**Vandlgard® storeroom lock, electrically unlocked outside lever (fail secure)**



- Lever with key cylinder outside; lever inside; deadlatch
- Powered state: outside lever continuously unlocked (when in EU mode)
- When power is removed (via switch or power failure), in EU mode outside lever is locked
- Vandlgard® feature allows outside lever, when locked, to rotate without engaging latch
- Key outside retracts latch but cannot change the normal locked or unlocked state of the outside lever
- Inside lever always free for immediate egress

Note: Auto detects 12 or 24V DC. Chassis mounted switch allows field selectable EL/EU setting.

To order configured with Request to Exit (RX), specify RX under special options.

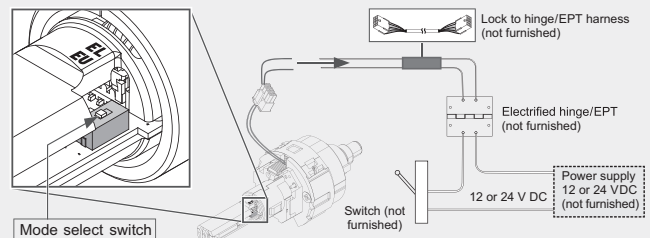
**Electrical Requirements**

- Input Voltage: auto-detects 12V to 24V DC
- Max current draw: 0.24 amp @ ambient (240mA)
- Holding current: 0.01 amp (10mA)
- Temperature range: 15°F - 120°F (-18° - 49°C)

**Request to Exit (RX)**

- Normally open, normally closed and common leads provided
- Electrical rating: 3A @ 125V AC / 2A @ 30V DC

**Wiring Instructions**



# Quick View of ND Series Functional Offerings Across Related Products

ND Series and sister product, the ALX Series, “perfectly suite” to one another by sharing roses and levers. Function options for ALX Series represent interior doors most appropriate for Grade 2 applications.

Mechanical & Electrified			Lock Series			ND Trim Options	
Function	ANSI		ND	PC	ALX	Status Indication	Ligature Resistant HSLR
<b>Non-Keyed Functions</b>							
10	F75	Passage latch	●	●	●		●
12	F89	Exit lock	●				●
25	-	Exit lock with exterior blank plate	●		●		
30	F77	Patio lock	●				
40	F76	Bath/bedroom privacy lock	●	●	●	●(outside)	●
44	-	Hospital privacy lock	●		●	●(outside)	●
45	-	Time out lock with Vandgard®	●				
170	-	Single dummy trim	●	●	●		
172	-	Double dummy trim	●	●	●		
<b>Keyed Functions</b>							
25 x 70	F113	Classroom exit lock	●				
25 x 80	F112	Storeroom exit lock	●				
50	F82	Entrance/office lock	●	●	●	●(inside or outside)	●
52	-	Keyed privacy lock	●			●(outside)	
53	F109	Entrance lock	●	●	●	●(inside or outside)	●
55	-	Entrance lock with automatic unlocking	●			●(outside)	
60 with XN12-001	-	Vestibule lock with interior unlocking only	●				
70	F84	Classroom lock, exterior lockdown only	●	●	●		●
73	F90	Corridor lock	●				●
80	F86	Storeroom lock	●	●	●		●
81	F86	Accessible storeroom lock	●				●
85	F93	Faculty restroom lock	●				●
91	F82	Vandgard® entrance/office lock	●			●(inside)	●
92	F109	Vandgard® entrance lock	●			●(inside)	●
94	F84	Vandgard® classroom lock, exterior lockdown only	●				●
96	F86	Vandgard® storeroom lock	●				●
97	F90	Vandgard® corridor lock	●				●
<b>Double cylinder functions</b>							
60	F88	Vestibule lock	●				●
66	F91	Store lock	●				●
70 X 80	-	Classroom x storeroom lock	●				
72 with XN12-002	F80	Communicating lock	●				
72 with XN12-003	F80	Vandgard® communicating lock	●				
78	F110	Classroom security lock (180-degree lockdown)	●			●(inside)	●
82	F87	Institution lock	●				●
93	F88	Vandgard® vestibule lock	●				●
98	F110	Vandgard® classroom security lock (180-degree lockdown)	●			●(inside)	●
<b>Electrified functions</b>							
12EL/EU	-	Exit lock, electrically locked/unlocked outside lever	●				●
80EL/EU	-	Storeroom lock, electrically locked/unlocked outside lever	●				●
96EL/EU	-	Vandgard® storeroom lock, electrically locked/unlocked outside lever	●				●

Gray dots denote ALX functions with Vandgard locked lever protection available as an option.

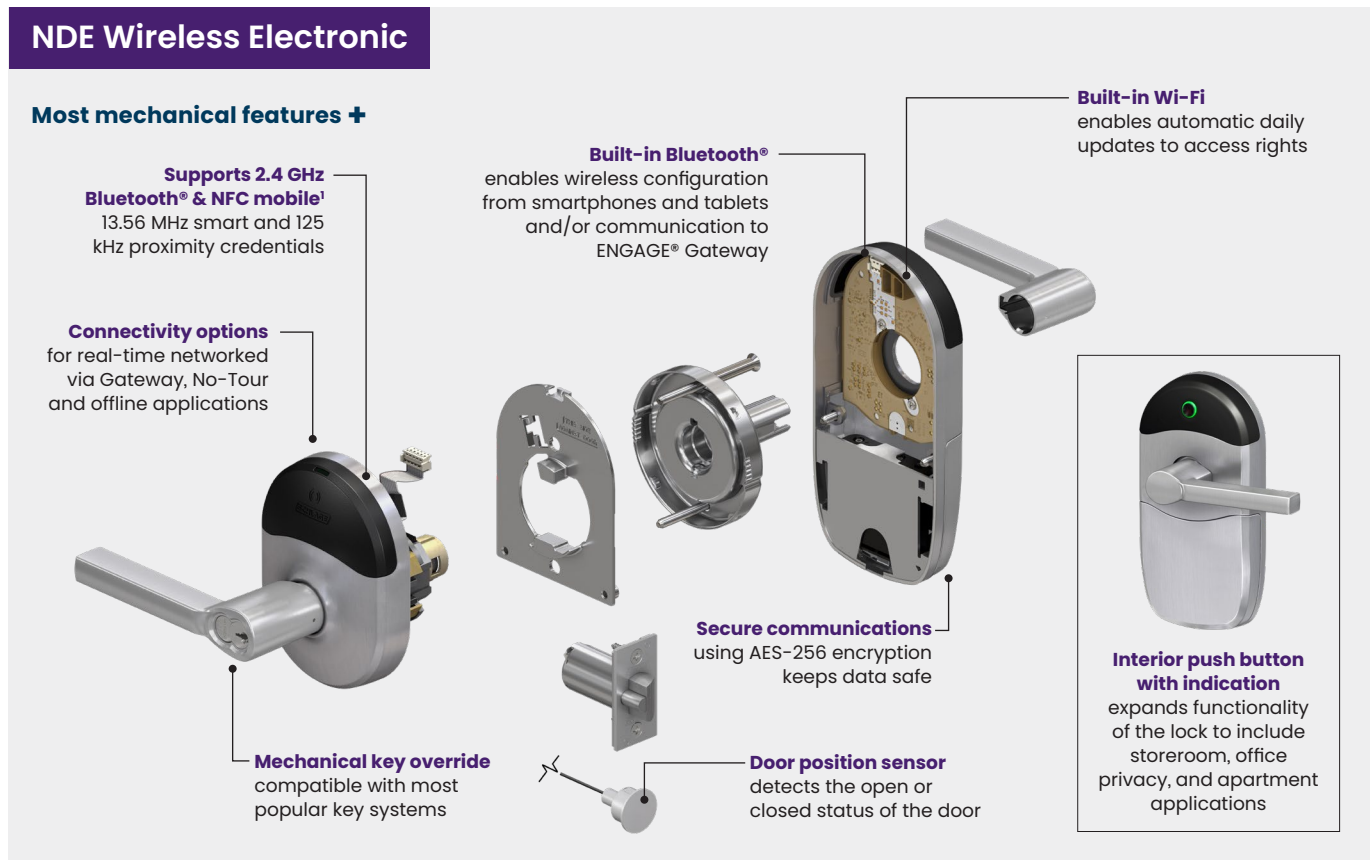
# NDE Wireless Electronic Locks

The Schlage NDE mobile enabled wireless cylindrical lock is designed to affordably extend electronic access control deeper into the building beyond traditional perimeter and high security openings. It also offers users the security and convenience of using a smart device to gain access.<sup>1</sup>

NDE is ideal for office and suite entries, conference rooms, common area doors, resident units and sensitive storage areas. It suites with all Schlage ND levers and keyways to provide attractive options to meet the requirements of nearly any environment.



1. Dependent on availability of compatible mobile credential.



## Convenience You Can Trust

NDE wireless locks simplify installation by combining the lock, credential reader, door position sensor and request-to-exit switch all in one device, eliminating the need to install additional components or run wires to each opening.

Versatility in communications options means it can function in offline or No-Tour mode or as a networked lock with either periodic check-ins or real-time management.

### Freedom of Choice

The open architecture design of NDE allows it to be managed by Allegion software or be integrated into popular physical access control systems through our PACS Alliance program. This enables customers to choose the system that best fits their requirements now and move to a different solution at any time.

### Interoperability

Schlage NDE with Si option provides full support for HID® smart and NFC mobile credentials, providing interoperability and allowing customers to leverage existing HID credential investments but yet choose the right access control solution for their applications.

## Key Features

- Interior push button with indication provides storeroom, office, privacy, and apartment functionality
- Standard multi-technology credential compatibility includes Schlage MIFARE®, Bluetooth® and NFC mobile², and proximity
  - Optional support for HID® smart and NFC mobile credentials
- Wireless configuration from connected smart devices
- Built-in Wi-Fi® enables automated daily updates sent directly from host software
- Networked real-time communication available with the ENGAGE Gateway and PACS provider solutions³
- Fits mechanical ND door prep with minor modifications
- Weather resistant design
- Up to 2 years of battery life

1. Dependent on PACS provider integrations and capabilities. Visit [us.allegion.com/alliances](https://us.allegion.com/alliances) for more information.

2. Use of mobile credential is dependent on availability of compatible mobile credential.

3. Integration with NDE mobile enabled wireless locks required for operation. For information on PACS providers and their capabilities, visit [us.allegion.com/alliances](https://us.allegion.com/alliances).

## Specifications

### NDE Wireless Electronic

Users	Up to 5,000 <sup>1</sup>
Audits	Up to 2,000 <sup>1</sup>
Credential verification time <sup>2</sup>	Smart and proximity: ≤ 1 second Mobile: mobile device dependent
Visual communications	LED (red, amber, green)
Audible communications	Audible indicator (field configurable)
Communication standards	<ul style="list-style-type: none"> <li>• 2.4 GHz Wi-Fi® (IEEE 802.11b/g/n)</li> <li>• WPA2, WPA, WEP, 802.1x</li> <li>• Bluetooth® low energy (version 4.2)</li> <li>• Transport Layer Security (TLS) version 1.2</li> <li>• Advanced Encryption Standard (AES), 256-bit</li> </ul>
Gateway communication range	Up to 30' in typical building environments. A detailed site survey is recommended using the <a href="#">ENGAGE Test Kit (TKE)</a> . Reference <a href="#">ENGAGE™ Gateway Data Sheet</a> for additional detail.
Wake-Up on Radio	Responds to command from host in less than 5 seconds when linked to ENGAGE Gateway (requires PACS provider system)
Data rate	54 Mbps
Connectivity options	<ul style="list-style-type: none"> <li>• Bluetooth via mobile device (send updates at the lock)</li> <li>• Wi-Fi access point (automatic daily updates<sup>8</sup>)</li> <li>• No-Tour<sup>6</sup></li> <li>• ENGAGE Gateway (real-time communication) - RS-485 to ACP or IP to host</li> </ul>
Battery life <sup>4</sup>	Up to 2 years (using 4 AA batteries)
Operating temperature	Exterior: -31° to 151° F (-35° to 66° C) Exterior: -13° to 151° F (-25° to 66° C) (NDEBSi) Interior: 32° to 120° F (0° to 49° C) (battery)
Operating humidity	0 - 100% non-condensing
Mechanical	See page 38 for all mechanical specifications

### Multi-Technology Reader Specifications

Credential technologies	Proximity (125 kHz), Smart (13.56 MHz), Bluetooth (LE, 2.4 GHz), and Near Field Communication (NFC)
Standards	ISO standard 15693 and ISO 14443
Maximum read range	Proximity: up to 1.25" Smart: up to .75" Bluetooth Low Energy: up to 15' NFC: mobile device dependent
Proximity credential compatibility	Schlage®, ISONAS™, HID <sup>5</sup> , GE/CASI ProxLite®, AWID®, and LenelProx®
Smart credential support <sup>9</sup>	Secure sector support: Schlage MIFARE Classic®, Schlage MIFARE Plus®, Schlage MIFARE® DESFire® CSN only support: HID iCLASS®, HID iCLASS SE®, MIFARE Classic/Plus/DESFire <sup>7</sup>
Mobile credential support <sup>3</sup>	Schlage Mobile Bluetooth® credential, integrated PACS/Proptech mobile credential with Bluetooth, Apple Wallet® NFC student ID and employee badge mobile credentials, Google Wallet™ NFC student ID and employee badge mobile credentials
Si Option for HID® credential support	Secure application area of HID iCLASS®, iCLASS SE®, Seos® and MIFARE® DESFire® EV1 smart credentials, iCLASS Standard Key and Elite Keys, HID NFC mobile credentials, all Schlage MIFARE and mobile credentials Does not support: Proximity, HID Seos Bluetooth mobile

1. Maximum capacity of lock. May vary by access control software.
2. Response time does not include latency time of host when linked with an ENGAGE Gateway or when using No-Tour.
3. Dependent on PACS /Proptech provider capabilities. Visit [us.allegion.com/alliances](http://us.allegion.com/alliances) for more information.
4. Assuming indoor application, default settings, 80 actuations, interior LED disabled and one Wi-Fi update per day.
5. Proximity bit lengths greater than 37 not supported.
6. With MT20W and smart credential (Schlage MIFARE 1K Byte or larger) or mobile credential. Consult your access control software provider for specific support.
7. Specify CE-5901-0402 for ISONAS credential parity.
8. Daily update will occur within 24 hours as scheduled by the host.

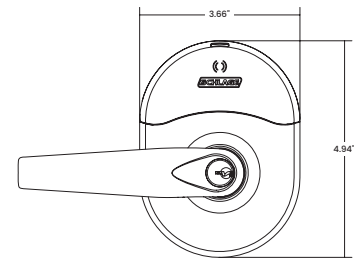
For additional credential support information please reference the [Schlage Credential Compatibility Guide](#).

### Available Status Signals

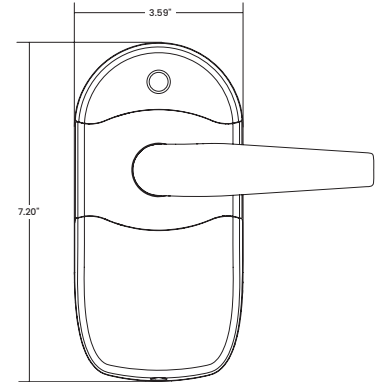
Consult your access control software provider for specific scope of support.

- Request-to-exit
- Door position
- Interior cover tamper
- Magnetic tamper
- Battery status
- Lock/unlock status
- Communication status

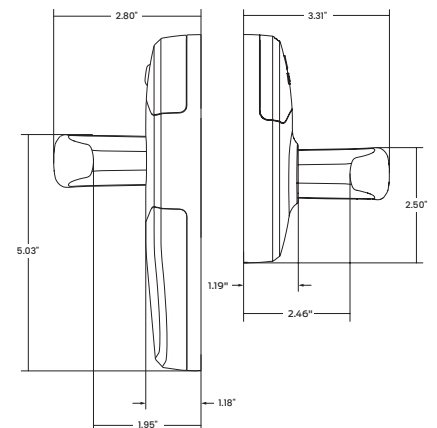
### Exterior of the Lock



### Interior of the Lock



### Interior/Exterior - Profile



## NDEB and NDEBSi

Interior push button lock design enables a range of functional selections via the ENGAGE Mobile App.

All four functions share these characteristics:

- Lockset is normally secure with outside lever disengaged
- Valid normal credential or key momentarily unlocks door (except Apartment function)
- Valid toggle credential may be used to change to a passage or secured state
- A mechanical key will retract the latch
- Inside lever always allows free egress
- Vandlgard allows outside lever to rotate freely while remaining locked

### Storeroom/Classroom

- Interior push button on inside housing confirms state of the lock via LED indicator

### Office

- Interior push button on inside housing can be used to select a passage or secured state and confirms state of the lock via LED indicator

Note: Meets the need for lockdown function for safety and security.

### Privacy

- Interior push button on inside housing may be used to select a privacy status
- The interior push button will disable normal electronic access from the exterior and confirms state of the lock via LED indicator
- Opening the door or pressing the interior push button a second time on the inside housing deactivates the privacy status

Note: Requires a door position sensor.

### Apartment

- Valid normal or toggle credential is used to change to a passage or secured state
- Interior push button on inside housing may be used to select a passage or secured state and confirms state of the lock via LED indicator
- Opening the door or pressing the interior push button a second time causes the lockset to toggle to passage
- While in passage mode, the lockset can only be secured while the door is closed by pressing the interior push button or using a normal credential on the exterior

Note: Requires a door position sensor

# Ensuring Mechanical & Electronic Security Continuity

In buildings where electronic access control is used, true security can only be effective if your key system plan accounts for doors where credential use is present. Most often, credential access exists on common area doors and perimeter entrances where limited key distribution is desired. Many facilities also have high security areas where credential use is beneficial.

Credentials are like keys in that they come with varying degrees of duplication control. Any facility employing high security where both keys and credentials are in use, must ensure cohesive application of both. Because of this, the choice of credential should reflect the highest level of key system security in the building and vice versa.



# Readers

Schlage's comprehensive portfolio of and wall mount readers are designed to provide enhanced levels of security, efficiency and convenience to any facility.



**MTB11**  
Mullion



**MTB15**  
Single gang



**MTKB15**  
Keypad  
single gang



**MT11**  
Mullion



**MT15**  
Single gang



**MTK15**  
Keypad  
single gang



**MTM515**  
with magnetic  
stripe reader



**MTMSK15**  
with magnetic stripe  
reader and keypad

## Mobile Enabled Multi-Technology Readers:

- Compatible with Bluetooth® and NFC-enabled smartphones
- Supports a wide range of credential technologies including mobile Bluetooth and NFC, high-frequency smart and low-frequency proximity
- Eases transition from existing legacy system to secure smart technology or mobile solution
- Reader options available with keypad for high security applications
- OSDP, RS-485 and Wiegand support
- Reads proximity, Schlage MIFARE Classic®, Plus®, or DESFire® credentials

## Multi-Technology Readers:

- Supports for both high-frequency smart and low-frequency proximity credentials
- Compatible with NFC-enabled mobile devices
- Enables migration from legacy platform to secure smart technology
- Reader options available with keypad for high security applications
- Wiegand and RS-485 support
- Reads proximity, Schlage MIFARE Classic®, Plus®, or DESFire® credentials



**SM10**  
Mini-mullion

## Smart (13.56 MHz) Technology Reader:

- Advanced contactless technology, more secure than magnetic stripe and proximity options
- Advanced data encryption secures against duplication
- Recommended for new systems
- Open platform, designed to work with a wide array of systems and applications beyond access control
- SM10 reader features a Wiegand or Clock and Data interface
- Reads proximity, Schlage MIFARE Classic®, Plus®, or DESFire® credentials



**PR10**  
Mini-mullion

## Proximity (125 kHz) Technology Reader:

- Basic open contactless technology; recommended for legacy systems only
- Encoded with a unique number that cannot be updated or changed
- PR10 is a Wiegand interface, single technology proximity reader

# Credentials

With the latest in NFC and Bluetooth® mobile, as well as smart, multi-technology and proximity technologies, Schlage offers a credential solution for every budget and security strategy.



### Mobile Credentials:

- Schlage offers both Bluetooth® and NFC mobile credentials which provide different user experiences
- Schlage Mobile Bluetooth® Credentials require the user to tap on a specific door in an app and are commonly used in small businesses or multifamily sites
- NFC credentials provide a frictionless experience through the Apple Wallet® or Google Wallet™ and are ideal for higher education or corporate settings
- Mobile credentials require software integration, please confirm support with your PACS or PropTech provider



### Multi-Technology MIFARE® Credentials:

- Available with MIFARE Classic® and MIFARE® DESFire®
- Multi-technology options available to support transition from proximity or magnetic stripe to secure MIFARE® or MIFARE® DESFire®
- Compatible with Schlage and other industry manufacturers' readers and electronic locks
- Form factors include ISO and clamshell cards, fobs, PVC disks, and wristbands
- Available in multiple memory capacities



### Proximity Credentials:

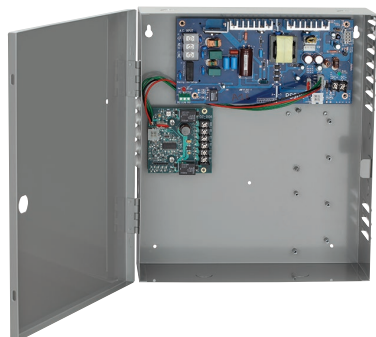
- 125 kHz proximity technology
- Available in ISO style cards with or without magnetic stripe, clamshell style cards, keyfobs or PVC adhesive disks

Schlage Credential Services provide unique advantages with programs designed to help businesses thrive and make doing business easier. Our services include CardTrax™, custom encryption keys, custom artwork and more.



Scan or click the link below to check out **Credential Services**

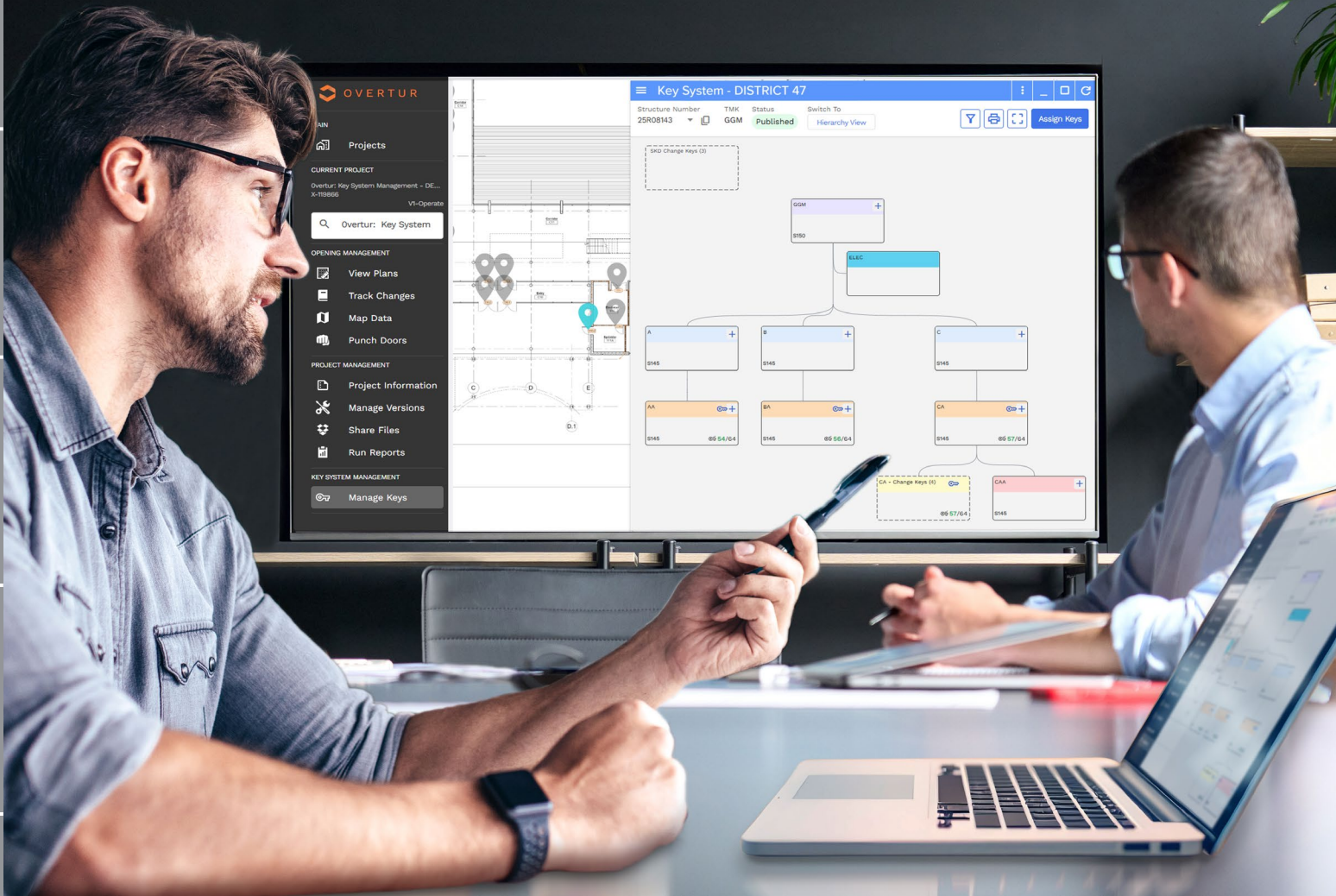
# Power Supplies



Schlage power supplies are designed for speed and ease of installation upfront with the assurance post installation of the highest quality output in terms of even power flow to protect downstream devices.

Engineered with versatility and reliability in mind, they can be factory ordered to meet specific needs or configured in-field using a wide selection of option boards. The use of separate battery management ensures tight output power regulation to protect downstream devices. The series includes three models: PS902, PS904 and PS906. They vary by total amperage output capability, ranging from 2 to 6 amps.

## Overtur™ Key System Management



## Overtur™ Key System Management

A key system is a critical investment in the security of any facility or campus. Safeguarding its integrity requires more than the use of restricted key products and a well-designed master key plan—it takes meticulous tracking of key issuances and returns. While effective management is essential, it doesn't have to be time-consuming or complicated. Overtur™ Key System Management offers a smarter, more efficient solution for managing even the most complex systems with ease.

### Getting Started Costs Nothing

Made for security professionals, the Overtur digital platform supports the design, construction, and long-term management of door security systems. Accessible via web or mobile app, it provides intuitive tools for creating, collaborating on, and maintaining key systems.

### Subscription Options Simplify Key System Management

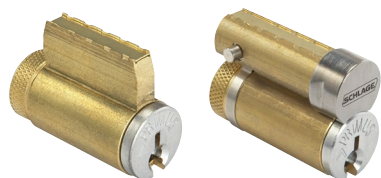
Paper-based or ad hoc tracking methods often lack the convenience of cloud access, making it easy to lose visibility—and costly should a master key go missing. Overtur Key System Management subscriptions, available through door hardware distributors, offer powerful user-friendly, digital tools for managing bitting, pinning and the tracking of keys and key rings. Features include on-demand bitting lists and pinning charts, next available change key information, customizable reports, and digital storage of key holder agreements.

Learn more at  
[www.OverturKey.com](http://www.OverturKey.com)

# Cylinders & Key Systems

A strong lock is only part of the security solution—proper key control is equally important. Schlage offers extensive options to meet the security needs of the specific project.

## Cylinders



### Conventional (KIL) & Full Size Interchangeable Core (FSIC) Cylinder Options<sup>1</sup>

- 6-pin large format keying (standard)
- 7-pin small format keying (A2 pinning) available in SL cylinders
- 6-pin available in Schlage Classic Obverse and Everest 29 S and T keyway families plus supported legacy keyways
- Primus security upgrades offer geographic exclusivity
- Primus UL 437 listed high-security cylinders are capable of withstanding extreme physical attack

1. Everest 29 S123 keyway is the default keyway on all Schlage locks unless specified otherwise.
2. Restricted keyway cores require authorization from the end user.



### Small Format Interchangeable Core (SFIC) Cylinder Options<sup>2</sup>

- 7-pin small format keying (A2 pinning)
- Available in Schlage Everest 29 R and legacy Everest B restricted keyway families<sup>2</sup>

### SL Format Cylinders

- Same A2 pinning style as SFIC cylinders but in Conventional and FSIC formats
- Enables an Everest 29 R or Everest B keyway facility to gain Primus XP program security

## Key Systems

### Everest 29 Keyway Families

- Patented through 2029
- Available restricted keyway families provide a higher level of administrative security
- Can be integrated into an existing legacy Everest key system
- Upgradeable to Primus XP and UL 437 levels of security

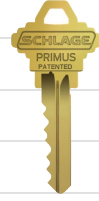

### Classic Obverse Keyway Family

- Open keyway – keys are duplicated and available without ordering formalities
- Upgradeable to Primus RP and UL 437 levels of security

### Legacy Keyway Families

- Patent expired keyway families include legacy Everest, Quad, Numbered and Reversed
- Everest and Quad are upgradeable to Primus XP and UL 437 cylinders to regain patent and key control protection for critical points of entry



Administrative Security		Schlage Everest 29™		
Primus® geographically exclusive side bit milling options	Schlage Classic Obverse	End user exclusive nationwide	4N	 
		End user exclusive within time zone/country	4Z	
		End user exclusive within zip code	3G	
		End user controlled; non-exclusive	3U	
		Dealer exclusive within time zone/country	2	
		Dealer exclusive within zip code	1+	
		Authorized dealer only; non-exclusive	1	
End user controlled; non-exclusive				
Authorized dealer only				
No authorization				
<b>OPEN</b> Schlage Classic Obverse FSIC and Conventional				
<ul style="list-style-type: none"> <li>Duplicate anywhere</li> </ul>				
<b>OPEN</b> Schlage Everest 29 S FSIC and Conventional				
<ul style="list-style-type: none"> <li>Patented design</li> <li>Check pin in cylinder</li> </ul>				
<b>RESTRICTED</b> Schlage Everest 29 R <sup>1</sup> SFIC, FSIC <sup>2</sup> and Conventional <sup>3</sup> Schlage Everest 29 T FSIC and Conventional				
<ul style="list-style-type: none"> <li>Requires letter of authorization</li> <li>Patented design</li> <li>Check pin in cylinder</li> </ul>				
<b>Primus RP RESTRICTED</b> Schlage Classic Obverse FSIC and Conventional				
<ul style="list-style-type: none"> <li>5 levels of side bit milling exclusivity</li> <li>Patent protection to 2029</li> <li>Independent sidebar and finger pin locking mechanisms</li> </ul>				
<b>Primus XP RESTRICTED</b> Schlage Everest 29 R FSIC <sup>2</sup> and Conventional <sup>3</sup> Schlage Everest 29 S or T FSIC and Conventional				
<ul style="list-style-type: none"> <li>5 levels of side bit milling exclusivity</li> <li>Patent protection to 2029</li> <li>Independent sidebar and finger pin locking mechanisms</li> </ul>				
<b>Primus UL 437 Option</b> Schlage Classic Obverse Conventional Schlage Everest 29 R Conventional SL Schlage Everest 29 S or T Conventional				
<ul style="list-style-type: none"> <li>Hardened steel drill pins</li> <li>Proven pick and drill resistant</li> <li>Withstands extreme physical attack</li> </ul>				

Physical Security

COMPARABLE ELECTRONIC SECURITY – Ensure your credential is as secure as your keyway

<b>Proximity Credentials</b> <ul style="list-style-type: none"> <li>Low frequency, entry level proximity cards</li> <li>Easily duplicated</li> </ul>	<b>MIFARE Classic® Smart Credentials</b> <ul style="list-style-type: none"> <li>Legacy smart card technology</li> <li>Difficult to duplicate</li> </ul>	<b>MIFARE® DESFire® Smart Credentials</b> <ul style="list-style-type: none"> <li>Advanced data encryption makes duplication nearly impossible</li> <li>Most secure credentials available from Schlage</li> </ul>
--	---	--

1. Limited dealer controlled programs available.  
 2. FSIC and Conventional in the form of SL cylinders that accept a 7-pin SFIC key.  
 3. UL 437 available on Primus XP SL cylinders in the conventional format only.

## Primus Access Control & High Security Cylinders

The Primus program of access control and high security cylinders is available to add patented key control and varying degrees of geographical exclusivity to most Schlage 6- and 7-pin key systems, whether Everest, Everest 29, or Classic Obverse keyways. In addition to a standard pin tumbler mechanism, Primus cylinders incorporate a patented finger pin and sidebar design, providing a “dual-locking” cylinder that is virtually pick-proof. For added resistance to drilling and other physical attack, specify UL 437 listed high-security cylinders.

To upgrade an existing Schlage C open keyway system, a changeover to Classic Obverse Primus RP cylinders on critical points of entry is recommended. With it you gain patent protection against unauthorized key duplication to 2029 and Primus administrative and physical security levels. Everest 29 Primus XP cylinders are recommended for new key systems and for upgrading existing Everest legacy key systems.

# Cylinder Options

When ordering a configured lock, specify cylinder type in the product ordering string as shown on page 37. The chart below shows part numbers when ordering Schlage cylinders and tailpieces separately.

## Keyed Functions:

### ND25 x 70

Classroom exit lock

### ND25 x 80

Storeroom exit lock

### ND50 (ND91 Vandlgard)

Entrance/office lock

### ND52

Keyed privacy lock

### ND53 (ND92 Vandlgard)

Entrance lock

### ND55

Entrance lock with automatic unlocking

### ND60 (ND93 Vandlgard)

Vestibule lock

### ND60 with XN12-001

Vestibule lock with interior unlocking only

### ND66

Store lock

### ND70 (ND94 Vandlgard)

Classroom lock, exterior lockdown only

### ND70 x 80

Classroom by storeroom lock

### ND72 with XN12-002 (ND72 with XN12-003 Vandlgard)

Communicating lock

### ND73 (ND97 Vandlgard)

Corridor lock

### ND78 (ND98 Vandlgard)

Classroom security lock (180-degree lockdown)

### ND80 (ND96 Vandlgard)

Storeroom lock

### ND81

Accessible storeroom lock

### ND82

Institution lock

### ND85

Faculty restroom lock

### ND80EL/EU (ND96EL/EU Vandlgard)

Storeroom lock, electrically locked/  
unlocked outside lever

### NDEB

### NDEBSi

Specify keyway and plug face finish when ordering cylinders as parts (606, 622, 626, or 643e).

1. Available for Athens, Rhodes, Sparta and Tubular levers only.
2. Available for Rhodes levers only.

## Conventional (KIK/KIL) Cylinders

Cylinder type	Sold separate part number	Pins	Cylinder mechanism
P, P6	23-065	5, 6	Pin and tumbler (P6 is default)
Z	91-018	7	SL cylinder (restricted Everest 29R or Everest B)
L	20-765	6	Primus
L	20-565	6	Primus UL 437 high security
L	20-765-RP	6	Primus RP Classic Obverse keyways
L	20-565-RP	6	Primus RP UL 437 high security
L	91-718-XP	7	Primus XP SL (restricted Everest 29R and Everest B keyways)
L	20-565-XP	6	Primus XP (restricted Everest 29S or T and Everest C or D keyways)
L	91-518-XP	6	Primus XP UL 437 high security
L-CO <sup>1</sup>	-	6	Lever is made to fit Corbin Russwin® CR2000-034 KIL cylinder
L-SA <sup>1</sup>	-	6	Lever is made to fit Sargent 6 and 10 line KIL cylinders

## Interchangeable Cores

Cylinder type	Sold separate part number	Pins	Cylinder mechanism
R	23-030 23-031 (no logo)	6	FSIC pin and tumbler (default)
M	91-161 91-162 (no logo)	7	FSIC SL cylinder (restricted Everest 29R or Everest B)
M	91-861-XP 91-862-XP (no logo)	7	FSIC Primus SL (restricted Everest 29R and Everest B keyways)
J	20-740 20-741 (no logo)	6	FSIC Primus
J	20-740-XP 20-741-XP (no logo)	6	FSIC Primus XP
J-CO6 <sup>1</sup>	-	6	Lever is made to fit Corbin Russwin® 8000 LFIC
J-CO7 <sup>2</sup>	-	7	Lever is made to fit Corbin Russwin® 8000-7 LFIC
J-ME <sup>1</sup>	-	6	Lever is made to fit Medeco 32 Series FSIC
J-SA <sup>1</sup>	-	6	Lever is made to fit Sargent 6300 LFIC
J-YA6 <sup>1</sup>	-	6	Lever is made to fit Yale I210 or Medeco 31 FSIC
J-YA7 <sup>2</sup>	-	7	Lever is made to fit Yale I220 FSIC
T	23-030-ICX	6	FSIC refundable construction core – color coded
G	80-037	7	FSIC combined (Everest 29R) (default FSIC)
H	80-035	7	FSIC refundable construction core – color coded

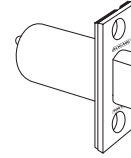
# Latches & Strikes

## Latches

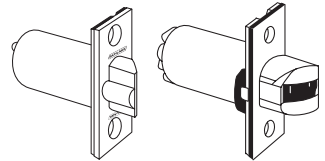
ND latches are adjustable for flat or bevel edged doors, and are finished to match the lock trim. All ND Series latches have 1/2" throw and 1" housings except the anti-friction fire door latch, which has a 3/4" throw. Please see the Schlage pricebook for more options including extended backset strikes (up to 5") and rabbited latch and strike kits.

	Part Number	Backset	Description
Springlatch	13-248	2-3/4"	Square corner, 1-1/8" x 2-1/4" (default springlatch)
	14-010	3-3/4"	Square corner, 1-1/8" x 2-1/4"
Deadlatch	14-047	2-3/8"	Square corner, 1-1/8" x 2-1/4"
	14-048	2-3/8"	Square corner, 1" x 2-1/4"
	13-247	2-3/4"	Square corner, 1-1/8" x 2-1/4" (default deadlatch)
	14-042	2-3/4"	Anti-friction fire door latch (3/4" throw)
	14-028	3-3/4"	Square corner, 1-1/8" x 2-1/4"

**Springlatch**



**Deadlatch**



3/4" throw anti-friction deadlatch for pairs of fire doors

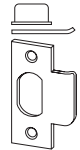
## Strikes

The ND Series is available with both T-Strike and ANSI strikes in a variety of lip lengths to accommodate different door preps.

	Part Number	Available Lip Lengths <sup>1</sup>	Description
T-strike	10-013 xx	1-1/8" 1-1/2"	T-strike, square corner, with strike box, 1-1/8" x 2-3/4". For ND and wired ND only.
	10-016	1-1/8"	T-strike, square corner, with deep strike box, for fire door latch. 1-1/8" x 2-3/4". For ND and wired ND only.
	10-132 xx	1-1/8" 1-1/2"	T-strike, square corner, with strike box, DPS magnet, 1-1/8" x 2-3/4". For NDE only.
	10-133	1-1/8"	T-strike, square corner, with deep strike box, DPS magnet, for fire door latch. 1-1/8" x 2-3/4". For NDE only.
ANSI	10-025 xx	1-3/16" 1-3/8" 1-1/2"	ANSI, no box, 1-1/4" x 4-7/8" (1-3/16" lip is default strike). For ND and wired ND only.
	10-130 xx	1-3/16" 1-3/8" 1-1/2"	ANSI, no box, DPS magnets, 1-1/4" x 4-7/8" (1-3/16" lip is default strike). For NDE only.
	K510-066	-	Box for ANSI strike.

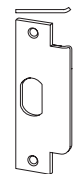
**T-strike**  
(10-013)

1-1/8" x 2-3/4" x 3/32"



**ANSI strike - default**  
(10-025)

1-1/4" x 4-7/8" x 3/32"

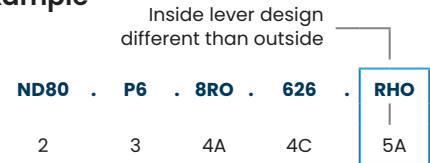


1. Specify lip length (xx) as LIPI-1/8 for 1-1/8", LIPI-1/2 for 1-1/2", etc.

# ND Series Ordering Instructions

To order ND Series products, attribute values should be provided in the same sequence shown below. Each value should be separated by a period.

## Example



		Required for all lock orders				Outside style			Inside style			Door dimensions			Options						Keying						
Brand	Series + Function	Cylinder type (keyed functions only)		Outside lever design	Outside rose design	Outside finish	Inside lever design	Inside rose design	Inside finish	Handing (HSLR or Indication trims)	Latch	Strike	Door thickness	Extended	Strike lip length	Latch extension	Box for ANSI strike	Pack cylinders loose (PLC)	Trim options	Breakaway Rhodes lever	Special options	Screw option	Request to Exit (RX)	Buy American Act compliant	Keying code	Keyway	Pack keys independently
1	2	3	4A	4B	4C	5A	5B	5C	6	7	8	9A	9B	9C	10A	10B	10C	10D	10E	10F	10G	10H	10I	11A	11B	11C	

Only required if specifying less rose.

Only required if specifying different than outside style.

Only required when deviating from the products default. Specify only the deviated attribute(s).

Only required when deviating from the product default. Specify only the deviated attribute(s).

Detail																				
1	Brand	Specify SCH for Schlage (required only when specifying a product Less "LLL" any attribute).																		
2	Series + Function	Specify ND + function choice from list																		
3	Cylinder type (specify code for keyed functions only)	<table border="0"> <tr> <td><b>Conventional cylinders</b></td> <td><b>FSIC - Full size interchangeable core</b></td> <td><b>SFIC - Best® style, small format interchangeable cores</b></td> </tr> <tr> <td><b>P6</b> 6-pin cylinder (default)</td> <td><b>R</b> FSIC, 6-pin</td> <td><b>G</b> SFIC 7-pin</td> </tr> <tr> <td><b>P</b> 6-pin cylinder, keyed 5</td> <td><b>T</b> FSIC - Construction Core</td> <td><b>H</b> Refundable Construction SFIC</td> </tr> <tr> <td><b>Z</b> Everest SL cylinder, 7-pin</td> <td><b>M</b> Everest SL - FSIC, 7-pin</td> <td><b>BDC</b> Disposable Construction SFIC</td> </tr> <tr> <td><b>L</b> Less Schlage cylinder</td> <td><b>J</b> Less Schlage FSIC</td> <td><b>B</b> Less SFIC</td> </tr> <tr> <td><b>C</b> Less double cylinder</td> <td></td> <td></td> </tr> </table> <p>Other options feature levers made to fit competitive cylinders (see page 34 for complete list).</p>	<b>Conventional cylinders</b>	<b>FSIC - Full size interchangeable core</b>	<b>SFIC - Best® style, small format interchangeable cores</b>	<b>P6</b> 6-pin cylinder (default)	<b>R</b> FSIC, 6-pin	<b>G</b> SFIC 7-pin	<b>P</b> 6-pin cylinder, keyed 5	<b>T</b> FSIC - Construction Core	<b>H</b> Refundable Construction SFIC	<b>Z</b> Everest SL cylinder, 7-pin	<b>M</b> Everest SL - FSIC, 7-pin	<b>BDC</b> Disposable Construction SFIC	<b>L</b> Less Schlage cylinder	<b>J</b> Less Schlage FSIC	<b>B</b> Less SFIC	<b>C</b> Less double cylinder		
<b>Conventional cylinders</b>	<b>FSIC - Full size interchangeable core</b>	<b>SFIC - Best® style, small format interchangeable cores</b>																		
<b>P6</b> 6-pin cylinder (default)	<b>R</b> FSIC, 6-pin	<b>G</b> SFIC 7-pin																		
<b>P</b> 6-pin cylinder, keyed 5	<b>T</b> FSIC - Construction Core	<b>H</b> Refundable Construction SFIC																		
<b>Z</b> Everest SL cylinder, 7-pin	<b>M</b> Everest SL - FSIC, 7-pin	<b>BDC</b> Disposable Construction SFIC																		
<b>L</b> Less Schlage cylinder	<b>J</b> Less Schlage FSIC	<b>B</b> Less SFIC																		
<b>C</b> Less double cylinder																				
4	Outside style	<b>4A:</b> input lever code <b>4B:</b> required only if specifying less rose <b>4C:</b> input ANSI finish code																		
5	Inside style	Specify only if different than outside design choices or if specifying a product Less (LLL) any attribute																		
6	Handing	When ordering HSLR or Indication trims, specify: <b>LH</b> Left Hand; <b>LHR</b> Left Hand Reverse; <b>RH</b> Right Hand; <b>RHR</b> Right Hand Reverse																		
7	Latch	Leave blank or specify part number if different from default latchbolt 13-247: 2-3/4" backset-with 1-1/8" x 2-1/4" square corner faceplate																		
8	Strike	Leave blank or specify part number if different from default strike 10-025: ANSI, no box, 1-1/4" x 4-7/8"																		
9	Door dimensions	Specify only attributes that deviate from these defaults: <b>9A:</b> 1-3/4" thickness <b>9B:</b> EE (Extended equally) <b>9C:</b> 1-3/16" lip																		
10	Options	Specify desired additional options: <b>10A:</b> 43-005 (5" backset extension) <b>10B:</b> K510-066 <b>10C:</b> PCL <b>10D:</b> Indicator message or instruction rose options - see price book <b>10E:</b> Breakaway Rhodes lever is dependent on type (closed, KIL, FSIC, or SFIC) - see price book <b>10F:</b> XN12-012 (standard trim chassis spacers) or XN12-307 (lead lining) <b>10G:</b> TORX <b>10H:</b> RX (functions ND10, ND12, ND80, ND81, and ND96) <b>10I:</b> BAA																		
11	Keying	Specify desired additional options: <b>11A:</b> Keyed Different (KD) <b>11B:</b> Specify only if different from default of Everest 29 S123 (Conventional and FSIC cylinders) or, if master keyed, Everest 29 S145 (Conventional and FSIC) and R125 (SFIC) <b>11C:</b> Specify only when requesting that keys be packed independently.																		

# NDE Wireless Electronic Lock Ordering Instructions

NDEB - P6 - SPA - 626 - LAT - XXX - XX-XXX - XXXXXXXX - XXX - S123

Series	Lever Cylinder	Outside		Inside (optional)		Backset & Latch	Strike	Dim	Additional Details
		Lever Style	Finish	Lever Style	Finish				
1	2	3	4	5	6	7	8	9	10

Selections correspond with the numbers above. See price book for specific configuration options.

**Detail**

1	Series	Specify NDEB: Mobile enabled cylindrical lock with configurable functions Specify NDEBSI: Mobile enabled cylindrical lock with configurable functions that fully support the security application area of HID® credential types															
2	Lever cylinder	<table border="0"> <tr> <td>Conventional</td> <td>FSIC - Full size interchangeable core</td> <td>SFIC - Best® Style, Small format interchangeable core</td> </tr> <tr> <td>P6 6-pin cylinder (default)</td> <td>R FSIC, 6-pin</td> <td>G SFIC 7-pin</td> </tr> <tr> <td>Z Everest SL cylinder, 7 pin</td> <td>J Less FSIC</td> <td>B Less SFIC</td> </tr> <tr> <td>L Less cylinder</td> <td>T FSIC - Construction Core</td> <td>H Refundable Construction SFIC</td> </tr> <tr> <td></td> <td></td> <td>BDC Disposable Construction SFIC</td> </tr> </table> <p>Other options feature levers made to fit competitive cylinders (see page 34 for complete list).</p>	Conventional	FSIC - Full size interchangeable core	SFIC - Best® Style, Small format interchangeable core	P6 6-pin cylinder (default)	R FSIC, 6-pin	G SFIC 7-pin	Z Everest SL cylinder, 7 pin	J Less FSIC	B Less SFIC	L Less cylinder	T FSIC - Construction Core	H Refundable Construction SFIC			BDC Disposable Construction SFIC
Conventional	FSIC - Full size interchangeable core	SFIC - Best® Style, Small format interchangeable core															
P6 6-pin cylinder (default)	R FSIC, 6-pin	G SFIC 7-pin															
Z Everest SL cylinder, 7 pin	J Less FSIC	B Less SFIC															
L Less cylinder	T FSIC - Construction Core	H Refundable Construction SFIC															
		BDC Disposable Construction SFIC															
3	Outside lever style	Input lever code: ATH (Athens), BRK (Boardwalk), BRW (Broadway), LAT (Latitude), LON (Longitude), OME (Omega), RHO (Rhodes), SPA (Sparta), TLR (Tubular), or tactile warning options															
4	Outside finish	Input ANSI finish code: 605 (Bright Brass), 606 (Satin Brass), 612 (Satin Bronze), 619 (Satin Nickel), 622 (Matte Black), 625 (Bright Chrome), 626 (Satin Chrome), 626AM (626 with antimicrobial), 643e (Aged Bronze)															
5	Inside lever style	Specify only if different than outside style															
6	Inside finish	Specify only if different than outside finish															
7	Backset & latch	Leave blank or specify part number if different from default latchbolt 13-247: 2-3/4" backset, deadlatch, square corner, 1-1/8" x 2-1/4"															
8	Strike	Leave blank or specify part number if different from default strike 47267101: ANSI, no box, 1-1/4" x 4-7/8"															
9	Dim (strike lip length)	Leave blank or specify part number if different from default 1-3/16" lip															
10	Additional details (keying)	Specify only if different from these defaults: Keyed Different (KD); Everest 29 S123 (Conventional and FSIC cylinders) or, if master keyed, Everest 29 S145 (Conventional and FSIC) and R125 (SFIC)															

ND Mechanical & ND Wired Electrified		NDE Wireless Electronic
<b>Chassis</b>		
Case material	Modular design of zinc and steel components plated for corrosion protection	
Door thickness	Standard: 1-5/8" (41 mm) to 2-1/8" (54 mm) Optional: 1-3/8" (35 mm) - 6" (152 mm) EE, EO, EI, ED configurations	Standard: 1-5/8" to 2" (41 mm to 51 mm)
Backset	Standard: 2-3/4" (70 mm) Optional: 2-3/8", 3-3/4", 5" (60, 92, 127 mm)	Standard: 2-3/4" (70 mm) Optional: 2-3/8" (60 mm)
Handing	Non-Handed	Right-handed from factory. Field-configurable without tools.
<b>Trim</b>		
Levers	Standard: Pressure cast zinc, plated to match product finish specification in nine designs - Athens (ATH), Boardwalk (BRK), Broadway (BRW), Latitude (LAT), Longitude (LON), Omega (OME), Rhodes (RHO), Sparta (SPA), and Tubular (TLR) Optional: Tactile feature available on all designs, specify 8AT, 8BK, 8BY, 8LT, 8LN, 8RO, 8SP, or 8TR	
Locked status indication trim	Cast zinc with high-density polycarbonate window	—
HSLR trim	High Security Ligature Resistant (HSLR) trim is heavy wrought, reinforced stainless steel in 630 Satin Stainless Steel finish	—
Roses/escutcheons	Wrought brass or zinc, plated to match product finish specification	Zinc, plated to match product finish specification
Finishes	Nine available: 605, 606, 612, 613, 619, 622, 625, 626, 643e (Note: NDE is not offered in 613); optional antimicrobial coating is available on 626 - order as 626AM	
<b>Latches &amp; Strikes</b>		
Latch	Standard: 1/2" (12 mm) throw spring latch or deadlatch (Stainless Steel) Optional: 3/4" (19 mm) throw anti-friction deadlatch available for pairs of doors	
Strike	Standard: ANSI curved Lip: 1-1/4" x 4-7/8" (32 mm x 124 mm) with 1-3/16" (30 mm) lip length Optional: T Strike, ANSI strikes with alternative lip lengths, dust box options	
<b>Cylinders &amp; Key Systems</b>		
Formats	Standard: 6-pin Conventional cylinder with two patented keys Optional: FSIC, SFIC, and 7-pin SL cylinder formats plus less cylinder options made to fit non-Schlage cylinders from Best, Corbin Russwin, Medeco, Sargent and Yale	
Keyways	Standard: 6-pin, patented Everest 29 S123 keyway Optional: Open, restricted, Primus®, master keying, and construction keying	
<b>Wired Electrified</b>		
Input voltage	Autodetecting 12-24V DC, +/- 10%	—
Operating mode	Fail Safe or Fail Secure via switch on chassis	—
Current draw	0.23 amp maximum; 0.01 amp holding	—
Request to exit	Modular - 3A @ 125V AC / 2A @ 30V DC	—
<b>Wireless Electronic</b>		
Input voltage	—	4 AA batteries
Operating mode	—	Selectable - secured, as-is, or passage
Communication	—	2.4 GHz Wi-Fi® (IEEE 802.11b/g/n) Bluetooth® low energy (version 4.2)
Request to exit	—	Integrated into chassis
Door position sensor	—	External sensor installed in door and frame
Tamper sensor	—	Integrated interior cover tamper
<b>Warranty</b>		
	10 years mechanical, 3 years wired electrified	1 year wireless electronic
<b>Certifications</b>		
ANSI/BHMA	All ND Series comply with A156.2-2011, Series 4000 Grade 1 cylindrical locks; Wired electrified complies with A156.25 (indoor); Wireless electronic complies with A156.25-2013 (locked outdoor) for electrified locking devices	
ICC	Complies with ICC A117.1 Accessible and Usable Buildings and Facilities	
UL/cUL	UL 10C and CAN/ULC-S104	UL 294; ULC 60839; UL 10C 3-hour
	All locks 3-hour A label single fire door 4'0" x 10'0"; pair doors 3-hour fire door 8'0" x 8'0" with 3/4" latch option; pair doors 90-minute fire 8'0" x 10'0" with 3/4" latch option	
CA Fire Code	All levers with a return to door of 1/2" (13 mm) or less comply (Rhodes, Sparta, Tubular, Omega, Longitude and Boardwalk)	
FL Building Code	Complies with Florida Building Code (ASTM E330, E1886, E1996) and Miami Dade (TAS 201, 202, 203) requirements for hurricanes	FL1592, FL10356, FL12400, FL14482
Federal	Meets FF-H-106C Series 161; BAA compliant, all functions	—
Other	—	ADA compliant, FCC Part 15, CSA C22.2 No. 205-M1983, Industry Canada (IC)

## About Allegion

At Allegion (NYSE: ALLE), we design and manufacture innovative security and access solutions that help keep people safe where they live, learn, work and connect. We're pioneering safety with our strong legacy of brands like CISA®, Interflex®, LCN®, Schlage®, SimonsVoss® and Von Duprin®. Our comprehensive portfolio of hardware, software and electronic solutions is sold around the world and spans residential and commercial locks, door closer and exit devices, steel doors and frames, access control and workforce productivity systems.

For more, visit [www.allegion.com](http://www.allegion.com)

KRYPTONITE ■ LCN ■  ■ STEELCRAFT ■ VON DUPRIN