



ALX Series

Grade 2 Modular, Cylindrical Locks



Contents

Overview	3	Ordering	17
Key Features	4	How to Order	17
Trims & Finishes	6	Options for Configured Locks	18
Accessibility & Life Safety	7	Ordering Instructions for Kitted Locks	19
Functions	8	Options for Kitted Locks	20
Non-Keyed Functions	9	Specifications	21
Keyed Functions	10	Product Specifications	21
ALX & ND Series Work Together	11	Architectural Specifications	22
Cylinders & Key Systems	12		
Overtur™ Key System Management	12		
Cylinders & Key Systems	13		
Key System Selection Tool	14		
Cylinder Options for Configured or Kitted Locks	15		

U.S. Customer Service

877-671-7011, Option 1, Option 1
mechanical.support@allegion.com
electronic.support@allegion.com Support@allegion.com

Ordering

Allegion_Orders@allegion.com
 eFax: 1-833-312-3669

Canada Customer Service

800-900-4734
Canada.CustomerService@allegion.com

Ordering

Canada.Orders.Service@allegion.com
 eFax: 1-800-209-4734

Technical Product Support

Mechanical: 877-671-7011, Option 2, Option 1
 Electronic: 877-671-7011, Option 2, Option 2
Mechanical_Locks_TechProdSupport@allegion.com
Electronic_Lock_TechProdSupport@allegion.com
Readers_Credentials_Biometrics_TechProdSupport@allegion.com
Engage.Tech.Prod.Support@allegion.com

Master Key Support

Mechanical_Locks_TechProdSupport@allegion.com

Ordering

U.S. > [Customer Service](#)
 Canada > Canada.Masterkey@allegion.com
 International > Intl.SCH.SS@allegion.com

Online Support

Knowledge Center > kc.allegion.com
 Interactive Installation Instructions >
instructions.allegion.com/instr/418/34405
 How To Videos > www.youtube.com/SchlageSecurity
 or us.allegion.com/supportvideos
 Code Support > idighardware.com

Restricted Account Support

KeyControlDepartment@allegion.com
Support.restrictedproduct@allegion.com > [Sign In](#)

Overtur™ Key System Support

Support.overtur.allegion.com > [Submit a ticket](#)

INNOVATION THAT WORKS FOR YOU

The Schlage® ALX Series cylindrical lock is designed to exceed expectations. It features a patent-pending chassis and modular design to provide flexibility and value beyond security—enabling in-field function setup or exchange and a field-selectable Vandlgard® feature for all locking functions. Order ALX fully configured and ready to install or assemble on demand from chassis, function, and lever kits—giving distributors same-day pickup options, locksmiths reliable truck stock that reduces callbacks, and facility managers an easy way to repurpose rooms or change functions without new hardware. ALX also suits with the ND Grade 1 Series so you can seamlessly gain Grade 1 strength, security, and functionality where needed.



A Legacy of Trust

Over a century ago, Walter Schlage invented the cylindrical lock. His was a simple solution to a problem hidden in plain sight, and from it he built a company that has since grown to become one of the most recognizable names in the security industry. Delivering on quality and building on the trust of our customers, Schlage continues a legacy of providing innovative locking hardware and access control solutions to suit all types of commercial, institutional and multifamily spaces. And, everything we do is backed by friendly, knowledgeable service and support.



Beyond the Brand

Schlage is part of the Allegion family of safety and security solutions featuring other pioneering brands like LCN® and Von Duprin®. Focusing on security around the door and in adjacent areas, we strive to be a trusted advisor to our customers, providing seamless access solutions to secure buildings, people and property. We do this by collaborating with our customers and offering valued services that support their day-to-day responsibilities, including architectural and specification consulting, security and safety consulting, technical services, code compliance support, and training.

A Detailed Look

The X Factor

Qualities Defining a Lock Designed to Exceed Expectations

The Schlage ALX Series is a Grade 2 lock unlike any other. As a modular lock, it features a single, patent pending chassis design that supports most functions and all cylinder applications. The lock's ability to be configured on site to meet the functional need let's you avoid problems. You can do more with less, giving you an unprecedented level of flexibility to every aspect of how you use it.

Extreme Installation Simplicity

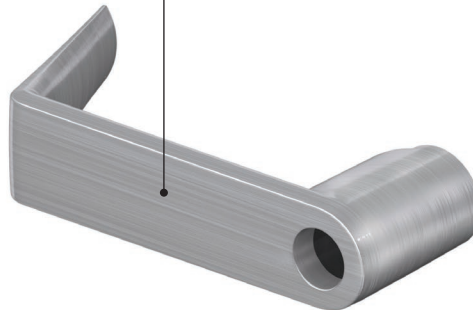
- Accommodates 1-3/8" to 1-3/4" door thickness with minimal chassis adjustment
- Captured screws in latch, strike and inside spring cage eliminate small, loose parts

Expansive Lever Offering

Perfectly suites with ND Series levers to offer 10 total lever designs

Extra functionality

Field reversible Vandlgard* to non-Vandlgard locked lever engagement

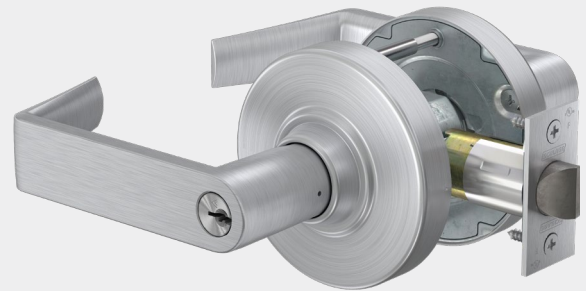


Exceptional Durability

- Deep-drawn spindle with 5 points of lever engagement prevents droop and wobble
- Grade 1 compression springs

NEXT LEVEL PARTS MANAGEMENT

The ALX Series gives you the advantage both on the job site and in the warehouse with flexible buying options. In its kitted form, the chassis is purchased separately from function and lever kits which are sold in convenient packs of five. Fewer unique parts means more space in your warehouse. There is also a special locksmith mix pack covering 10, 40, 50, 53 and 80 functions to help optimize truck stock.



Schlage ALX Series can be purchased as a configured lock... or as configurable kits for warehouse and jobsite flexibility.

A Detailed Look

Maximum Utility

One chassis fits all functions and cores to minimize inventory

Function Flexibility

- Patent pending chassis design allows quick, in-field function set up
- Field reversible Vandlgard® to non-Vandlgard locked lever engagement

Expanded Cylinder Support

Available levers accept all Schlage plus five competitive cylinder formats

Exceeds Grade 2 Strength Expectations

Stainless steel latchbolt



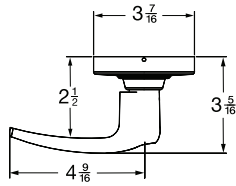
Chassis kits are chosen solely by desired finish. They are shipped non-Vandlgard but can be field-configured for Vandlgard functionality.

Function kits are sold in packs of five defined by function, finish, and latch backset. Locksmith assortment kits are available.

Levers are sold in five packs of same design with inside levers defined by function, finish and design, and outside levers by function/cylinder, finish and design.

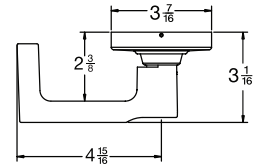
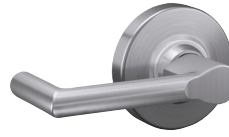
Lever Designs & Finishes

Athens (ATH)



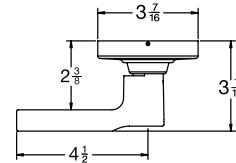
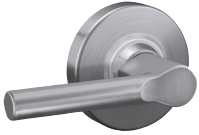
Cores KIL, FSIC, SFIC, L-CO, L-SA, J-CO6, J-SA

Boardwalk (BRK)¹



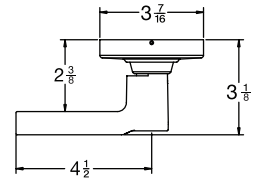
Cores KIL, FSIC, SFIC

Broadway (BRW)



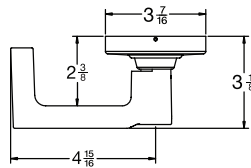
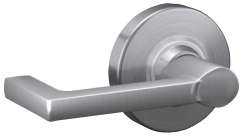
Cores KIL, FSIC, SFIC

Latitude (LAT)



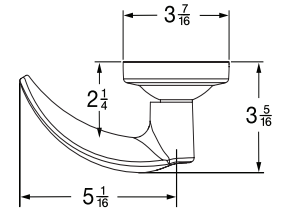
Cores KIL, FSIC, SFIC

Longitude (LON)¹



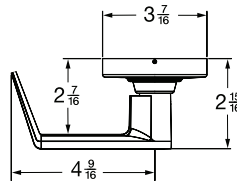
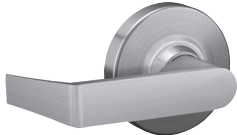
Cores KIL, FSIC, SFIC

Omega (OME)^{1,2}



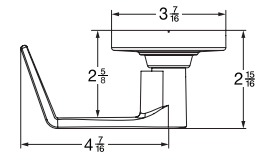
Cores KIL, FSIC, SFIC

Rhodes (RHO)¹



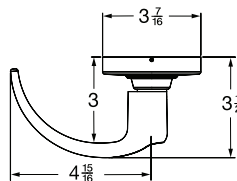
Cores KIL, FSIC, SFIC, L-CO, L-SA, J-CO6, J-CO7, J-SA

Saturn (SAT)¹



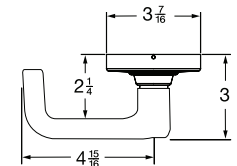
Cores KIL

Sparta (SPA)¹



Cores KIL, FSIC, SFIC, L-CO, L-SA, J-CO6, J-SA

Tubular (TLR)¹



Cores KIL, FSIC, SFIC, L-CO, L-SA, J-CO6, J-SA

Finishes



605

Bright Brass



606

Satin Brass



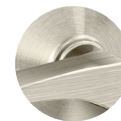
612

Satin Bronze



613

Oil Rubbed
Bronze



619

Satin Nickel



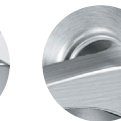
622

Matte Black



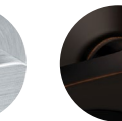
625

Bright
Chrome



626/626AM³

Satin Chrome/
Antimicrobial



643e

Aged Bronze

1. Boardwalk, Longitude, Omega, Rhodes, Saturn, Sparta and Tubular levers comply with California State code for return within 1/2" of door face.
2. Omega levers not available for kit system orders.
3. Antimicrobial finish option is not available for kit system orders.

Product information and specifications contained in this catalog are subject to change without notice. Please consult the factory.

Accessibility & Life Safety

Door hardware should be as effective in helping people go about their lives as it is in securing their environments. The ALX Series is designed with these requirements in mind.

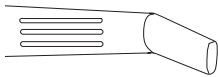
Accessibility

All Schlage ALX Series levers¹ comply with the Americans with Disabilities Act (ADA), which requires that “Operable parts shall be operable with one hand and shall not require tight grasping, pinching, or twisting of the wrist. The force required to activate operable parts shall be 5 pounds (22.2 N) maximum.”

Tactile Warning for the Visually Impaired

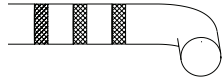
Tactile warning is a special texture applied to the outside lever to alert the visually impaired to a potential hazard on the opposite side of the door (electrical room, a workshop or other hazardous area, etc). Tactile warning is typically applied to the outside lever only and is specified by an 8 prefix on the lever design.

Milled



Order as follows:
 8AT for Athens
 8LT for Latitude
 8LN for Longitude
 8RO for Rhodes
 8SP for Sparta

Knurled



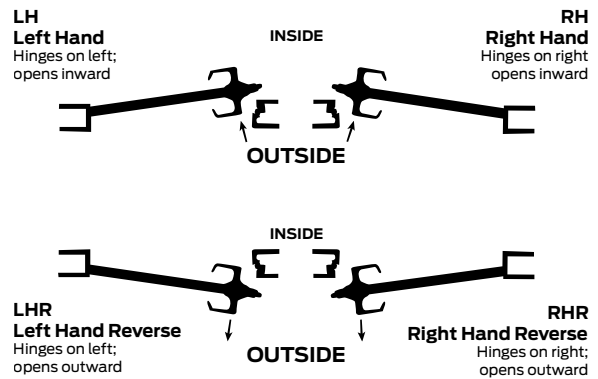
Order as follows:
 8BK for Boardwalk
 8BW for Broadway
 8TR for Tubular

Life Safety

The Schlage ALX Series is UL listed for use on 3-hour fire doors up to 4'0" x 8'0" for standard latches, grade 1 latch performance options available. The Boardwalk, Longitude, Omega, Rhodes, Saturn, Sparta and Tubular levers comply with the California State fire code for return to within 1/2" of the door face.

Door Handing

ALX Series locks can be configured during installation to support any door handing. As a result, it is not necessary to specify handing during the ordering process.

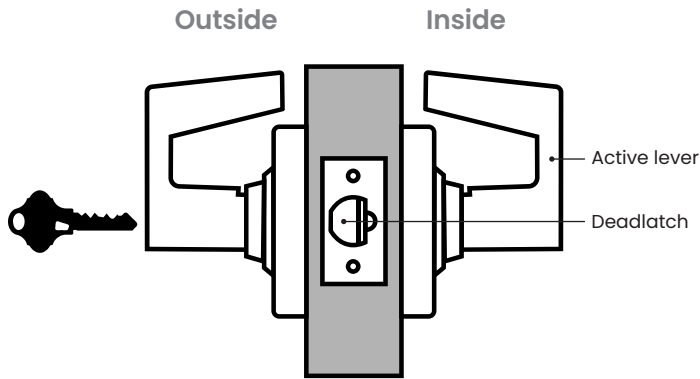


1. Functions utilizing a push/turn button in the lever to lock do not meet this standard.

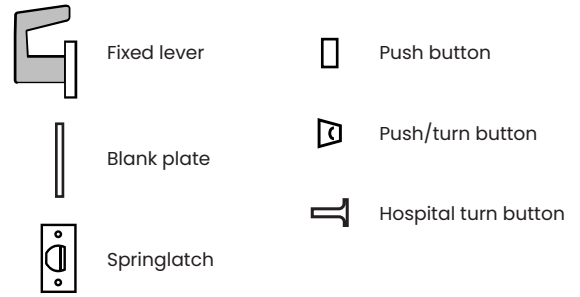


Functions

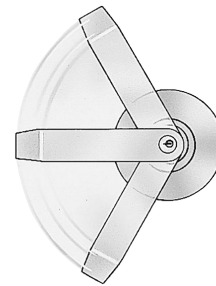
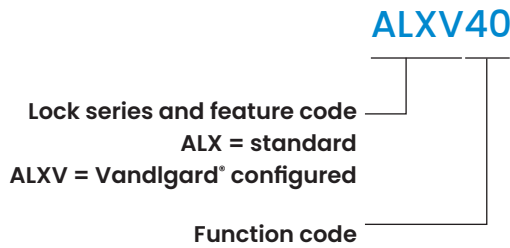
Legend



Key



Product Identification Guide



Vandlgard® Feature

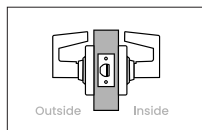
All locking functions feature Vandlgard locked lever protection as a field configurable option. It allows the outside lever to rotate freely up and down when locked to limit the ability of vandals to apply excessive force to the chassis helping to prevent damage to internal components.

Non-Keyed Functions

Schlage
ALX10

ANSI
F75

Passage latch



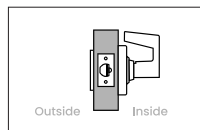
- Levers both sides; springlatch
- Latch retracted by lever from either side at all times
- Inside lever always free for immediate egress

Request to Exit (RX) available, kit sold separately.

Schlage
ALX25

ANSI
-

Exit lock with exterior blank plate

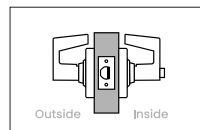


- Blank plate outside; lever inside; deadlatch
- Latch retracted by inside lever
- Inside lever always free for immediate egress

Schlage
ALX40/ALXV40

ANSI
F76

Bath/bedroom privacy lock



- Lever with emergency release recessed slot outside; push button in lever inside; springlatch
- In unlocked state latch is retracted by either lever
- Outside lever is made inoperative by pushing button on inside lever; Vandgard® option allows outside lever, when locked, to rotate without engaging latch
- Rotating inside lever retracts latch and releases button unlocking outside lever; closing door also unlocks preventing lock-out
- Emergency unlock: an emergency key (sold separate) or small, flat screwdriver inserted in outside lever and turned releases button to unlock
- Inside lever always free for immediate egress

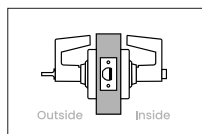
Request to Exit (RX) available, kit sold separately.

To order an emergency key use part number 35-270.

Schlage
ALX44/ALXV44

ANSI
-

Hospital privacy lock

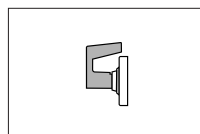


- Emergency turn in lever outside; push button in lever inside; springlatch
- In unlocked state latch is retracted by either lever
- Outside lever is made inoperative by pushing button on inside lever; Vandgard® option allows outside lever to rotate freely when locked
- Rotating inside lever retracts latch and releases button unlocking outside lever; closing door also unlocks preventing lock-out
- Emergency unlock: rotating emergency turn in outside lever releases button to unlock
- Inside lever always free for immediate egress

Schlage
ALX170

ANSI
-

Single dummy trim

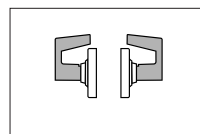


- Fixed lever one side only; no latch or chassis
- Used for door pull or matching inactive trim

Schlage
ALX172

ANSI
-

Double dummy trim



- Fixed levers—both sides; no latch or chassis
- Used for door pull or matching inactive trim

Note: Latch cover plates available. Order part number 47269199.

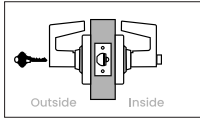
Functions

Keyed Functions

Schlage ALX50/ALXV50

ANSI
F82

Entrance/office lock

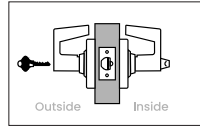


- Lever with key cylinder outside; push button in lever inside; deadlatch
- In unlocked state latch is retracted by either lever
- Outside lever is made inoperative by pushing button on inside lever; key outside does not lock, Vandlgard® option allows outside lever to rotate freely when locked
- Key outside or rotating inside lever retracts latch and releases button unlocking outside lever
- Inside lever always free for immediate egress

Schlage ALX53/ALXV53

ANSI
F109

Entrance lock



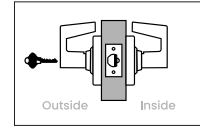
- Lever with key cylinder outside; push/turn button in lever inside; deadlatch
- In unlocked state latch is retracted by either lever
- Outside lever is made inoperative by pushing button or pushing and turning button on inside lever; key outside does not lock, Vandlgard® option allows outside lever to rotate freely when locked
- **Pushed button unlocking:** key outside or rotating inside lever retracts latch and releases button unlocking outside lever
- **Pushed/turned button unlocking:** key outside or rotating inside lever retracts latch but does not unlock outside lever; rotate inside button to start position to allow button release and unlocking by key or by rotating inside lever
- Inside lever always free for immediate egress

Caution: Egress without fully releasing the push/turn button can result in lock-out situations.

Schlage ALX70/ALXV70

ANSI
F84

Classroom lock, exterior lockdown only

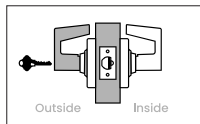


- Lever with key cylinder outside; lever inside; deadlatch
- In unlocked state latch is retracted by either lever
- Outside lever is locked or unlocked by key outside; Vandlgard® option allows outside lever to rotate freely when locked
- Inside lever always free for immediate egress

Schlage ALX80/ALXV80

ANSI
F86

Storeroom lock



- Lever with key cylinder outside; lever inside; deadlatch
- Outside lever always fixed, latch retracted by inside lever; Vandlgard® option allows outside lever to rotate freely when locked
- Key in outside lever retracts latch only
- Inside lever always free for immediate egress

Request to Exit (RX) available, kit sold separately.

ALX & ND Series Work Together

As a Grade 2 lock perfectly suited to the ND Series, ALX allows you to seamlessly suite between the two to gain Grade 1 strength, security, functionality and trim options where needed.

Schlage	ANSI	ALX	ND	Function description
Non-Keyed Functions				
10	F75	●	●	Passage latch
12	F89		●	Exit lock
12EL			●	Exit lock - electrically locked outside lever (fail safe)
12EU			●	Exit lock - electrically unlocked outside lever (fail secure)
25		●	●	Exit lock with exterior blank plate
40	F76	●	●	Bath/bedroom privacy lock
44		●	●	Hospital privacy lock
170		●	●	Single dummy trim
172		●	●	Double dummy trim
Keyed Functions				
50	F82	●	●	Entrance/office lock
52			●	Keyed privacy lock
53	F109	●	●	Entrance lock
55			●	Entrance lock with automatic unlocking
60	F88		●	Vestibule lock
66	F91		●	Store lock
70	F84	●	●	Classroom lock, exterior lockdown only
73	F90		●	Corridor lock
78	F110		●	Classroom security lock (180-degree lockdown)
80	F86	●	●	Storeroom lock
80EL			●	Storeroom lock - electrically locked outside lever (fail safe)
80EU			●	Storeroom lock - electrically unlocked outside lever (fail secure)
81	F86		●	Accessible storeroom lock
82	F87		●	Institution lock
85	F93		●	Faculty restroom lock
Special Functions				
25 x 70	F113		●	Classroom exit lock
25 x 80	F112		●	Storeroom exit lock
30	F77		●	Patio lock
45			●	Time out lock (Vandlgard standard)
60 w/XN12-001			●	Vestibule lock with interior unlocking only
70 x 80			●	Classroom by storeroom lock
72 w/XN12-002	F80		●	Communicating lock

Functions denoted with gray dots are also available with Vandlgard. ND Vandlgard functions may have a different order code.

ND Series Status Indication Options

ND Series features a unique, escutcheon style indicator that utilizes Schlage's patented 180-degree visibility to create the largest indication viewing window in the commercial lock market. Red and white messages are designed to be highly visible so viewers can know it's locked even from across the room. In classrooms, status indication can help students and teachers feel confident and secure. In restaurant settings, it can reduce patron time spent away from the table. In healthcare, it can inform staff of a patient's location when out of bed and give the patient a greater sense of privacy. It's another way in which you can gain the benefit of using ALX Series as a Grade 2 cost saving strategy while taking advantage of the many options ND Series offers.





Overtur™ Key System Management

A key system is a critical investment in the security of any facility or campus. Safeguarding its integrity requires more than the use of restricted key products and a well-designed master key plan—it takes meticulous tracking of key issuances and returns. While effective management is essential, it doesn't have to be time-consuming or complicated. Overtur™ Key System Management offers a smarter, more efficient solution for managing even the most complex systems with ease.

Getting Started Costs Nothing

Made for security professionals, the Overtur digital platform supports the design, construction, and long-term management of door security systems. Accessible via web or mobile app, it provides intuitive tools for creating, collaborating on, and maintaining key systems.

Learn more at
www.OverturKey.com

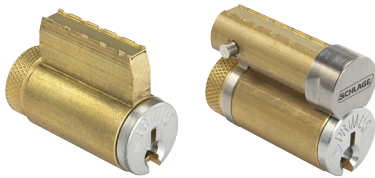
Subscription Options Simplify Key System Management

Paper-based or ad hoc tracking methods often lack the convenience of cloud access, making it easy to lose visibility—and costly should a master key go missing. Overtur Key System Management subscriptions, available through door hardware distributors, offer powerful user-friendly, digital tools for managing bitting, pinning and the tracking of keys and key rings. Features include on-demand bitting lists and pinning charts, next available change key information, customizable reports, and digital storage of key holder agreements.

Cylinders & Key Systems

A strong lock is only part of the security solution—proper key control is equally important. Schlage offers extensive options to meet the security needs of the specific project.

Cylinders



Conventional (KIL) & Full Size Interchangeable Core (FSIC) Cylinder Options¹

- 6-pin large format keying (standard)
- 7-pin small format keying (A2 pinning) available in SL cylinders
- 6-pin available in Schlage Classic Obverse and Everest 29 S and T keyway families plus supported legacy keyways
- Primus security upgrades offer geographic exclusivity
- Primus UL 437 listed high-security cylinders are capable of withstanding extreme physical attack

1. Everest 29 S123 keyway is the default keyway on all Schlage locks unless specified otherwise.
2. Restricted keyway cores require authorization from the end user.



Small Format Interchangeable Core (SFIC) Cylinder Options²

- 7-pin small format keying (A2 pinning)
- Available in Schlage Everest 29 R and legacy Everest B restricted keyway families²

SL Format Cylinders

- Same A2 pinning style as SFIC cylinders but in Conventional and FSIC formats
- Enables an Everest 29 R or Everest B keyway facility to gain Primus XP program security

Key Systems

Everest 29 Keyway Families

- Patented through 2029
- Available restricted keyway families provide a higher level of administrative security
- Can be integrated into an existing legacy Everest key system
- Upgradeable to Primus XP and UL 437 levels of security



Classic Obverse Keyway Family

- Open keyway – keys are duplicated and available without ordering formalities
- Upgradeable to Primus RP and UL 437 levels of security

Legacy Keyway Families

- Patent expired keyway families include legacy Everest, Quad, Numbered and Reversed
- Everest and Quad are upgradeable to Primus XP and UL 437 cylinders to regain patent and key control protection for critical points of entry



Administrative Security	Schlage Everest 29™					
	Schlage Classic Obverse	End user exclusive nationwide	4N		9N	
		End user exclusive within time zone/country	4Z		9Z	
		End user exclusive within zip code	3G		9G	
		End user controlled; non-exclusive	3U		9U	
		Dealer exclusive within time zone/country	2		8	
		Dealer exclusive within zip code	1+		7	
		Authorized dealer only; non-exclusive	1			
End user controlled; non-exclusive				Primus XP RESTRICTED	Primus UL 437 Option	
Authorized dealer only				Schlage Everest 29 R FSIC ² and Conventional ²	Schlage Classic Obverse Conventional	
No authorization				Schlage Everest 29 S or T FSIC and Conventional	Schlage Everest 29 R Conventional SL	
OPEN Schlage Classic Obverse FSIC and Conventional		RESTRICTED Schlage Everest 29 R ¹ SFIC, FSIC ² and Conventional ²			Schlage Everest 29 S or T Conventional	
<ul style="list-style-type: none"> Duplicate anywhere 		<ul style="list-style-type: none"> Patented design Check pin in cylinder 		<ul style="list-style-type: none"> 5 levels of side bit milling exclusivity Patent protection to 2029 Independent sidebar and finger pin locking mechanisms 	<ul style="list-style-type: none"> Hardened steel drill pins Proven pick and drill resistant Withstands extreme physical attack 	
		<ul style="list-style-type: none"> Requires letter of authorization Patented design Check pin in cylinder 				
		<ul style="list-style-type: none"> Patented design Check pin in cylinder 				
Physical Security						
COMPARABLE ELECTRONIC SECURITY - Ensure your credential is as secure as your keyway						
Proximity Credentials <ul style="list-style-type: none"> Low frequency, entry level proximity cards Easily duplicated 		MIFARE Classic® Smart Credentials <ul style="list-style-type: none"> Legacy smart card technology Difficult to duplicate 		MIFARE® DESFire® Smart Credentials <ul style="list-style-type: none"> Advanced data encryption makes duplication nearly impossible Most secure credentials available from Schlage 		

1. Limited dealer controlled programs available.
 2. FSIC and Conventional in the form of SL cylinders that accept a 7-pin SFIC key.
 3. UL 437 available on Primus XP SL cylinders in the conventional format only.

Primus Access Control & High Security Cylinders

The Primus program of access control and high security cylinders is available to add patented key control and varying degrees of geographical exclusivity to most Schlage 6- and 7-pin key systems, whether Everest, Everest 29, or Classic Obverse keyways. In addition to a standard pin tumbler mechanism, Primus cylinders incorporate a patented finger pin and sidebar design, providing a “dual-locking” cylinder that is virtually pick-proof. For added resistance to drilling and other physical attack, specify UL 437 listed high-security cylinders.

To upgrade an existing Schlage C open keyway system, a changeover to Classic Obverse Primus RP cylinders on critical points of entry is recommended. With it you gain patent protection against unauthorized key duplication to 2029 and Primus administrative and physical security levels. Everest 29 Primus XP cylinders are recommended for new key systems and for upgrading existing Everest legacy key systems.

Cylinder Options for Configured or Kitted Locks

Conventional Cylinders (Schlage Keyways)

When ordering as part of a configured lock, specify cylinder suffix in the product number as directed on page 17. The "L" less cylinder option also requires that you note the desired cylinder part number under the "other requirements" section of the order string. For kitted product orders simply order desired part number(s) as individual line items.

Configured Lock Specification	Sold Separate Part Number	Tailpiece Only	Functions	Pins	Cylinder Mechanism
P, P6	21-020	A700-031	50, 53, 80	5, 6	Pin and tumbler (standard)
	23-195	47270197	70		
Z	91-018	N523-022	50, 53, 80	7	SL cylinder (restricted Everest 29R or Everest B only)
	91-118	47270197	70		
L	20-765	N523-022	50, 53, 80	6	Primus
	20-685	47270197	70		
L	20-565	N523-022	50, 53, 80	6	Primus UL 437 (UL listed high security)
	20-566	47270197	70		
L	91-718-XP	N523-022	50, 53, 80	7	SL cylinder PrimusXP (restricted Everest 29R or Everest B only)
	91-118-XP	47270197	70		
L	20-765-XP	N523-022	50, 53, 80	6	Primus XP
	20-685-XP	47270197	70		
L	20-565-XP	N523-022	50, 53, 80	6	Primus XP UL 437 (UL listed high security)
	20-566-XP	47270197	70		

Note: Specify keyway and plug face finish when ordering as parts (606, 622, 626, or 643e).

Interchangeable Cores (Schlage Keyways)

When ordering as part of a configured lock, specify cylinder suffix in the product number as directed on page 17. The "J" less cylinder option also requires that you note the desired cylinder part number under the "other requirements" section of the order string. For kitted product orders simply order desired part number(s) as individual line items.

Configured Lock Specification	Sold Separate Part Number	Tailpiece Only	Functions	Pins	Cylinder Mechanism
R	23-030	N523-127	50, 53, 80	6	FSIC pin and tumbler (standard FSIC)
		47269168	70		
M	91-161	N523-127	50, 53, 80	7	FSIC Everest SL (restricted Everest 29R and Everest B only)
		47269168	70		
J	20-740	N523-127	50, 53, 80	6	Primus FSIC
		47269168	70		
J	91-861	N523-127	50, 53, 80	7	FSIC SL Primus (restricted Everest 29R and Everest B only)
		47269168	70		
T	23-030-ICX	N523-127	50, 53, 80	6	FSIC refundable construction core - color coded
		47269168	70		
G	80-037	N523-091	50, 53, 80	7	SFIC combined Everest 29 R family keyway (standard SFIC)
		47269620	70		
H	80-035	N523-091	50, 53, 80	7	SFIC refundable construction core - color coded
		47269620	70		

Note: Specify plug face finish when ordering as parts: 606, 622, 626 or 643e.

Cylinder Options for Configured or Kitted Locks

Available Less Cylinder Options Made to Fit Competitive Cores

When ordering as part of a configured lock, specify cylinder suffix in the product number as directed on page 17. For kitted product orders simply order desired part number(s) as individual line items.

Cylinder suffix	Tailpiece	Functions	Made to fit	Applicable levers
L-SA	09-060	50, 53, 80	Sargent KIL	ATH, RHO, SPA, TLR
L-CO	10-140	50, 53, 80	Corbin Russwin KIL	ATH, RHO, SPA, TLR
J-SA	09-063	50, 53, 80	Sargent 6-pin LFIC	ATH, RHO, SPA, TLR
J-CO6	09-062	50, 53, 80	Corbin Russwin 6-pin LFIC	ATH, RHO, SPA, TLR
J-CO7	10-141	50, 53, 80	Corbin Russwin 7-pin LFIC	RHO

10-Piece Economy Bulk Pack Cylinders				
Keyway Families	Cylinder Mechanism	Conventional	FSIC	Description
Classic	Standard pin and tumbler	09-409	09-411	Contains 10 each: shells (loaded), plugs, caps, cap pins, cap pin springs, check pins, and check pin springs. FSIC bulk packs also include 10 each: actuating rings, actuating pins, and control pins.
	Primus / Primus XP	09-833	09-836	
Everest and Everest 29	Standard	09-751	09-753	
	Primus / Primus XP	09-764	09-766	

10-Piece Economy Bulk Pack Tailpieces for Conventional (KIL) Cylinders			
Keyway Families	Cylinder Mechanism	Part Number	Description
Classic, Everest and Everest 29	N/A	09-416	10 ND/ALX A700-031 tailpieces

Keyways

Locks are furnished with Everest 29 S123 keyway (KD) unless otherwise specified.

	Specify	Primus Option Available	UL 437 Option Available	Conventional		FSIC		SFIC	Description
				Std	SL	Std	SL		
Open keyways	Everest 29	Sxxx ¹	•	•	•	•	•		Patented design, check pin in cylinder.
	Everest	Cxxx ¹	•	•	•	•	•		Legacy keyway no longer under patent, upgradeable to Everest 29.
	Classic Obverse	C, CE, E, EF F, FG, G	•	•	•	•	•		Readily duplicated open keyway (integration of Primus XP on critical points of entry recommended).
Restricted keyways	Everest 29	Txxx ¹	•	•	•		•		Patented design, check pin in cylinder, open and restricted ² keyway options.
	Everest 29	Rxxx ¹	•			•		•	
	Everest	Dxxx ¹	•	•	•		•		
	Everest	Bxxx ¹	•			•		•	Legacy product no longer under patent in open and restricted ² keyway options, upgradeable to Everest 29.

1. Everest 29 and Everest legacy keyway families each have 10 available keyways are always denoted by the letter followed by 3 numbers (example S123).
 2. Restricted keyway products require pre-authorization through the factory at restrictedproduct.allegion.com.

Ordering Instructions For Configured Locks

To order ALX Series products, attribute values should be provided in the same sequence shown below. Each value should be separated by a period.

Example

ALX80 . P6 . 8RO . 626 . RHO
 2 3 4A 4C 5A

Inside lever design different than outside

Dimensions should be provided with the whole number followed by a dash and then the fraction of an inch. Example: 1-3/4.

Required for all lock orders																					
Brand		Series + Function		Cylinder type (keyed functions only)			Outside style			Inside style			Options						Keying		
1	2	3	4A	4B	4C	5A	5B	5C	6	7	8	9A	9B	9C	9D	9E	10A	10B	10C		
			Outside lever design	Outside rose design	Outside finish	Inside lever design	Inside rose design	Inside finish	Latch	Strike	Strike lip length	Latch extension	Box for ANSI strike	Pack cylinders loose	Screw option	Buy America Act compliant	Keying code	Keyway	Pack keys independently		
			Only required if specifying less rose.			Only required if specifying different than outside style.			Only required when deviating from the product default. Specify only the deviated attribute(s).									Only required when deviating from the product default. Specify only the deviated attribute(s).			

If ordering a product "Less (LLL)" any attribute, values for each attribute must be provided.

Detail																										
1	Brand	Specify SCH for Schlage (required only when specifying a product Less "LLL" any attribute).																								
2	Series + Function	Specify ALX or ALXV + function choice from list																								
3	Cylinder type (specify code for keyed functions only)	<table border="0"> <tr> <td>Conventional cylinders</td> <td>FSIC - Full size interchangeable cores</td> <td>SFIC - Best® Style, Small format interchangeable cores</td> </tr> <tr> <td>P6 6-pin cylinder (default)</td> <td>R FSIC, 6-pin</td> <td>G SFIC 7-pin</td> </tr> <tr> <td>P 6-pin cylinder, keyed 5</td> <td>M SL - FSIC, 7-pin (A2 pinning)</td> <td>H Refundable Construction SFIC</td> </tr> <tr> <td>Z Everest SL cylinder, 7 pin</td> <td>T FSIC - Refundable construction</td> <td>BDC Disposable Construction SFIC</td> </tr> <tr> <td>L Less Schlage cylinder</td> <td>J Less Schlage FSIC</td> <td>B Less SFIC</td> </tr> <tr> <td>L-CO Less cylinder, made to fit Corbin Russwin KIL</td> <td>J-CO6 Less core, made to fit Corbin Russwin 6-pin LFIC</td> <td></td> </tr> <tr> <td>L-SA Less cylinder, made to fit Sargent KIL</td> <td>J-CO7 Less core, made to fit Corbin Russwin 7-pin LFIC</td> <td></td> </tr> <tr> <td></td> <td>J-SA Less core, made to fit Sargent 6-pin LFIC</td> <td></td> </tr> </table>	Conventional cylinders	FSIC - Full size interchangeable cores	SFIC - Best® Style, Small format interchangeable cores	P6 6-pin cylinder (default)	R FSIC, 6-pin	G SFIC 7-pin	P 6-pin cylinder, keyed 5	M SL - FSIC, 7-pin (A2 pinning)	H Refundable Construction SFIC	Z Everest SL cylinder, 7 pin	T FSIC - Refundable construction	BDC Disposable Construction SFIC	L Less Schlage cylinder	J Less Schlage FSIC	B Less SFIC	L-CO Less cylinder, made to fit Corbin Russwin KIL	J-CO6 Less core, made to fit Corbin Russwin 6-pin LFIC		L-SA Less cylinder, made to fit Sargent KIL	J-CO7 Less core, made to fit Corbin Russwin 7-pin LFIC			J-SA Less core, made to fit Sargent 6-pin LFIC	
Conventional cylinders	FSIC - Full size interchangeable cores	SFIC - Best® Style, Small format interchangeable cores																								
P6 6-pin cylinder (default)	R FSIC, 6-pin	G SFIC 7-pin																								
P 6-pin cylinder, keyed 5	M SL - FSIC, 7-pin (A2 pinning)	H Refundable Construction SFIC																								
Z Everest SL cylinder, 7 pin	T FSIC - Refundable construction	BDC Disposable Construction SFIC																								
L Less Schlage cylinder	J Less Schlage FSIC	B Less SFIC																								
L-CO Less cylinder, made to fit Corbin Russwin KIL	J-CO6 Less core, made to fit Corbin Russwin 6-pin LFIC																									
L-SA Less cylinder, made to fit Sargent KIL	J-CO7 Less core, made to fit Corbin Russwin 7-pin LFIC																									
	J-SA Less core, made to fit Sargent 6-pin LFIC																									
4	Outside style	4A: Input lever code 4B: Required only if specifying less rose 4C: Input ANSI finish code																								
5	Inside style	Specify only if different than outside design choices or if specifying a product less (LLL) any attribute																								
6	Latch	Leave blank or specify part number if different from default latchbolt: 2-3/4" backset with 1-1/8" x 2-1/4" square corner faceplate																								
7	Strike	Leave blank or specify part number if different from default strike: ANSI, no box, 1-1/4" x 4-7/8" with 1-3/16" lip																								
8	Strike lip	When specifying a non-default strike, input lip length if the part number is offered in multiple lip lengths																								
9	Options	9A: Specify part number 9B: Specify part number 9C: Specify PCL 9D: Specify SCRSTD for standard screws or TORX for tamper-resistant screws 9E: specify BAA																								
10	Keying	Specify only if different from these defaults: 10A: Specify only if different from default: Keyed Different (KD) 10B: Specify only if different from default of Everest 29 S123 (Conventional and FSIC cylinders) or, if master keyed, Everest 29 S145 (Conventional and FSIC) and R125 (SFIC) 10C: Specify only when requesting that keys be packed independently.																								

Options for Configured Locks

Latches

Schlage ALX Series latches accommodate flat or beveled edge doors, and are finished to match the lock trim. All ALX Series latches have 1/2" throw except the anti-friction fire door latch, which has a 3/4" throw. Please see the Schlage pricebook for more options including extended backset strikes (up to 5") and rabbited latch and strike kits.

Grade 2, UL 10C listed for 3-hour fire door

	Specify	Backset	Housing Diameter	Description
Springlatch (Restoring unless noted otherwise)	47267038	2-3/4"	7/8"	Square corner, 1-1/8" x 2-1/4", default
	47267039	2-3/4"	7/8"	Square corner, 1" x 2-1/4"
	47267041	2-3/4"	7/8"	Round corner, 1" x 2-1/4"
	47267046	2-3/8"	7/8"	Square corner, 1-1/8" x 2-1/4"
	47267048	2-3/8"	7/8"	Square corner, 1" x 2-1/4"
	47267050	2-3/8"	7/8"	Round corner, 1" x 2-1/4"
	47272065	2-3/4"	1"	Square corner, 1-1/8" x 2-1/4", grade 1 fire and windstorm performance
	14-010	3-3/4"	1"	Square corner, 1-1/8" x 2-1/4", non-restoring
Deadlatch (Non-restoring)	47267042	2-3/4"	7/8"	Square corner, 1-1/8" x 2-1/4", default
	47267043	2-3/4"	7/8"	Square corner, 1" x 2-1/4"
	47267045	2-3/4"	7/8"	Round corner, 1" x 2-1/4"
	47267051	2-3/8"	7/8"	Square corner, 1-1/8" x 2-1/4"
	47267052	2-3/8"	7/8"	Square corner, 1" x 2-1/4"
	47267054	2-3/8"	7/8"	Round corner, 1" x 2-1/4"
	14-028	3-3/4"	1"	Square corner, 1-1/8" x 2-1/4"
	47280169	2-3/4"	1"	Square corner, 1-1/8" x 2-1/4", grade 1 fire and windstorm performance
	14-042	2-3/4"	1"	Square corner, 1-1/8" x 2-1/4", anti-friction fire latch, 3/4" latch projection

Note: Specify finish. All latches for ALX Series, with the exception of the 3/4" anti-friction fire latch, locks have a 1/2" latch projection.

Strikes

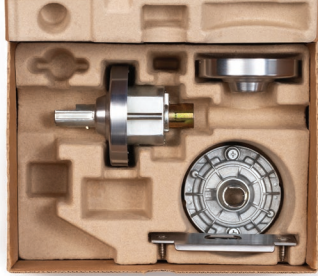


Locks are furnished with a 1-1/4" x 4-7/8" ANSI strike unless otherwise specified. Many additional strike options are available, see price book for details.

	Part Number	Available Lip Lengths	Description
T-Strike	10-013	1-1/8", 1-1/2"	Square corner with dust box, 1-1/8" x 2-3/4"
	10-016	1-1/8"	Square corner with deep dust box for 3/4" fire latch, 1-1/8" x 2-3/4"
ANSI Strike	47267101	1-3/16"	ANSI, no dust box, 1-1/4" x 4-7/8", default
Less Strike	LLL		
Dust Box	K510-066	N/A	Box for ANSI strike, must be specified

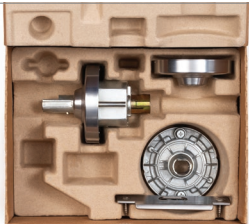


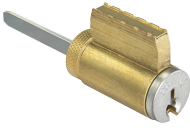
Ordering Instructions for Kitted Locks

For correct ordering and to help ensure no delays in the shipment of your product, follow the information sequence below.

Non-Keyed Functions

 <p>1</p> <p>Order Chassis Kit</p> <ul style="list-style-type: none"> • One chassis kit supports any function requiring a latch • Order as a part number with finish specified • Ordered singularly – one per box • Box is designed to allow you to install function kit components and levers if configured set up is preferred 	 <p>2</p> <p>Order Function Kit</p> <ul style="list-style-type: none"> • Individual function kits provide latch, function components, and tailpieces where appropriate (dummy functions and ALX25 are not available kitted) • Order as a part number defined by function and backset with finish specified • Special locksmith mix packs available, otherwise kits are ordered as packs of five • Clear packaging plus markings make it easy to identify function types 	 <p>3</p> <p>Order Lever Packs</p> <ul style="list-style-type: none"> • Order as a part number with function/core, finish, and design specified (available lever designs may be limited by cylinder option) • Ordered as separate packs of five for inside and outside levers • Box designed so you can see finish and function/core type plus markings make it easy to identify design
---	--	---

Keyed Functions

 <p>1</p> <p>Order Chassis Kit</p> <ul style="list-style-type: none"> • One chassis kit supports any function requiring a latch • Order as a part number with finish specified • Ordered singularly – one per box 	 <p>2</p> <p>Order Function Kit</p> <ul style="list-style-type: none"> • Individual function kits provide latch, function components and tailpieces where appropriate • Order as a part number defined by function and backset with finish specified • Special locksmith mixed packs available, otherwise kits are ordered as packs of five 	 <p>3</p> <p>Order Lever Packs</p> <ul style="list-style-type: none"> • Order as a part number with function/core, finish, and design specified (available lever designs may be limited by cylinder option) • Ordered as separate packs of five for inside and outside levers 	 <p>4</p> <p>Order Cylinders</p> <ul style="list-style-type: none"> • Order separately as cylinders with tailpieces • Individual tailpiece and tailpiece kit options available (70 function supplied with FSIC and SFIC tailpieces) • See pages 13 and 14 for details
---	---	---	---

Options for Kitted Locks

Chassis Kit

Grade 2, UL 10C Listed for 3-Hour Fire Door

	Specify	Function	Description
Chassis kit	ALX CK XXX	All	Chassis kit (includes chassis, inside spring cage, Rhodes roses and ANSI strike) Purchased individually

Note: Specify finish: 605, 606, 609, 612, 613, 619, 625, 626, or 643e. Example: ALX CK 626.

Function Kits (Sold in Packs of 5)

Grade 2, UL 10C Listed for 3-Hour Fire Door

	Specify	Function	Backset	Notes
Non-keyed functions	ALX FK 10 XXX 234	10 Passage	2-3/4"	Purchased in packs of 5 only. Specify finish: 605, 606, 609, 612, 613, 619, 625, 626 or 643e. Example: ALX FK 40 626 234.
	ALX FK 10 XXX 238	10 Passage	2-3/8"	
	ALX FK 40 XXX 234	40 Bath/bedroom privacy	2-3/4"	
	ALX FK 40 XXX 238	40 Bath/bedroom privacy	2-3/8"	
	ALX FK 44 XXX 234	44 Hospital privacy	2-3/4"	
	ALX FK 44 XXX 238	44 Hospital privacy	2-3/8"	
Keyed functions	ALX FK 50 XXX 234	50 Entrance/office	2-3/4"	Purchased in packs of 5 only. Specify finish: 605, 606, 609, 612, 613, 619, 625, 626 or 643e. Example: ALX FK 70 626 234.
	ALX FK 50 XXX 238	50 Entrance/office	2-3/8"	
	ALX FK 53 XXX 234	53 Entrance	2-3/4"	
	ALX FK 53 XXX 238	53 Entrance	2-3/8"	
	ALX FK 70 XXX 234	70 Classroom	2-3/4"	
	ALX FK 70 XXX 238	70 Classroom	2-3/8"	
	ALX FK 80 XXX 234	80 Storeroom	2-3/4"	
Other functions	N/A	25 Exit lock with exterior blank plate	N/A	Function kits are not needed for these functions. Order as configured product only.
	N/A	170 Single dummy	N/A	
	N/A	172 Double dummy	N/A	
Locksmith mixed kits	ALX FK LS XXX 234	1 each: 10, 40, 50, 53, 80	2-3/4"	Specify finish: 605, 606, 609, 612, 613, 619, 625, 626 or 643e. Example: ALX FK LS 605 238.
	ALX FK LS XXX 238	1 each: 10, 40, 50, 53, 80	2-3/8"	

Lever Kits (Sold in Packs of 5)

	Specify	Core Options	Design Options
Inside lever kits	SCH LP CORE XXX ¹ DESIGN	CL (Closed) BT (Button)	SAT RHO ATH SPA TLR LAT LON BRW BRK
Outside lever kits	SCH LP CORE XXX ¹ DESIGN	CL (Closed)	SAT RHO ATH SPA TLR LAT LON BRW BRK
		KIL (privacy turns or conventional cylinders)	RHO ATH SPA TLR LAT LON BRW BRK
		FSIC	RHO ATH SPA TLR
		SFIC	
		L-SA (Less cylinder, made to fit Sargent KIL)	
		L-CO (Less cylinder, made to fit Corbin Russwin KIL)	
J-SA (Less cylinder, made to fit Sargent LFIC)	RHO		
J-CO6 (Less cylinder, made to fit Corbin Russwin 6-pin LFIC)			
		J-CO7 (Less cylinder, made to fit Corbin Russwin 7-pin LFIC)	

1. Specify finish: 605, 606, 609, 612, 613, 619, 625, 626 or 643e. Example: SCH LP KIL 626 LAT.

Chassis	
Material	Modular design of zinc and steel components plated for corrosion protection
Door thickness	Standard: 1-3/8" (35 mm) to 1-3/4" (44 mm)
Handing	Non-handed

Trim	
Levers	Standard: Pressure cast zinc, plated to match product finish specification in ten designs - Athens (ATH), Boardwalk (BRK), Broadway (BRW), Latitude (LAT), Longitude (LON), Omega (OME), Rhodes (RHO), Saturn (SAT), Sparta (SPA), and Tubular (TLR) Optional: Tactile feature available on most designs, specify 8AT, 8BK, 8BY, 8LT, 8LN, 8RO, 8SP, or 8TR
Roses	Wrought brass, plated to match product finish specification
Finishes	Nine available: 605, 606, 612, 613, 619, 622, 625, 626, 643e; optional antimicrobial coating is available on 626—order as 626AM

Latch	
Backset	Standard: 2-3/4" (70 mm) Optional: 2-3/8", 3-3/4", 5" (60, 95, 127 mm)
Faceplate	Standard: 1-1/8" x 2-1/4" (29 mm x 57 mm) square corners Optional: Multiple options with square or radius corners
Latch	Standard: 1/2" (13 mm) throw spring latch or deadlatch (Stainless Steel) with 7/8" housing diameter Optional: 3/4" (19 mm) throw anti-friction fire deadlatch
Strike	Standard: ANSI curved lip: 1-1/4" x 4-7/8" x 1-3/16" (32 mm x 124 mm x 30 mm) Optional: T Strike, ANSI strikes with alternative lip lengths, dust box options

Keying	
Formats	Standard: 6-pin Conventional cylinder with two patented keys Optional: FSIC, SFIC, and 7-pin SL cylinder formats plus less cylinder options made to fit non-Schlage cylinders from Corbin Russwin and Sargent
Keyways	Standard: 6-pin, patented Everest 29 S123 keyway Optional: Open, restricted, Primus®, master keying, and construction keying

Warranty	
	10 years mechanical

Certifications	
ANSI/BHMA	Certified A156.2-2022 Series 4000, Grade 2; exceeds standard for lever and spindle strength and durability
ICC	Complies with ICC A117.1 for Accessible and Usable Buildings and Facilities
UL/cUL	All locks listed for A label single fire door 4' x 8' or 4' x 10' 3-hour; pair doors 8' x 8' 3-hour; and 8' x 10' 90-minute; Letter F and UL symbol on latch front indicate listing
UL 437	Optional UL listed high-security cylinders available in Conventional format
CA Fire Code	All levers with a return to door of 1/2" (13 mm) or less comply (Boardwalk, Longitude, Omega, Rhodes, Saturn, Sparta, and Tubular)
FL Building Code	ASTM E330, E1886, E1996 and Miami Dade (TAS 201, 202, 203) requirements for hurricanes
Federal	Meets FF-H-106C Series 161
ADA compliant	All lever designs meet Americans with Disabilities Act requirements

Architectural Specifications

Section 087100 – Door Hardware

PART 2 – PRODUCTS

2.01 CYLINDRICAL LOCKS – GRADE 2

A. Manufacturers and Products:

1. Scheduled manufacturer and product: Schlage ALX Series

B. Requirements:

1. Provide cylindrical locks conforming to ANSI/BHMA A156.2 Series 4000, Grade 2, and UL Listed for 3-hour fire doors with a minimum cycle life of 1 million.
2. Cylinders: Refer to "KEYING" article.
3. Provide locks with standard 2-3/4 inches (70 mm) backset, unless noted otherwise, with 1/2-inch latch throw. Provide 3/4" latch throw for UL listing as pairs.
4. Provide locksets with separate anti-rotation thru-bolts, and no exposed screws.
5. Provide independently operating levers with two external return spring cassettes mounted under roses to prevent lever sag.
6. Provide a minimum of 5 points of lever engagement between the cassette spindle and lever shank to prevent lever sag.
7. Provide standard ASA strikes unless extended lip strikes are necessary to protect trim.
8. Plug-n-Play – Provide modular lockset allowing lock functions to be created for 7 typical functions by inserting/installing parts into the exterior of a fully assembled chassis.
9. Reconfigurable Chassis – Provide modular lockset that allows the function to be reconfigured by removing external components from the chassis.
10. Lever Trim: Solid cast levers and wrought roses on both sides.

About Allegion

At Allegion (NYSE: ALLE), we design and manufacture innovative security and access solutions that help keep people safe where they live, learn, work and connect. We're pioneering safety with our strong legacy of brands like CISA®, Interflex®, LCN®, Schlage®, SimonsVoss® and Von Duprin®. Our comprehensive portfolio of hardware, software and electronic solutions is sold around the world and spans residential and commercial locks, door closer and exit devices, steel doors and frames, access control and workforce productivity systems.

For more, visit www.allegion.com

KRYPTONITE ■ LCN ■  ■ STEELCRAFT ■ VON DUPRIN